

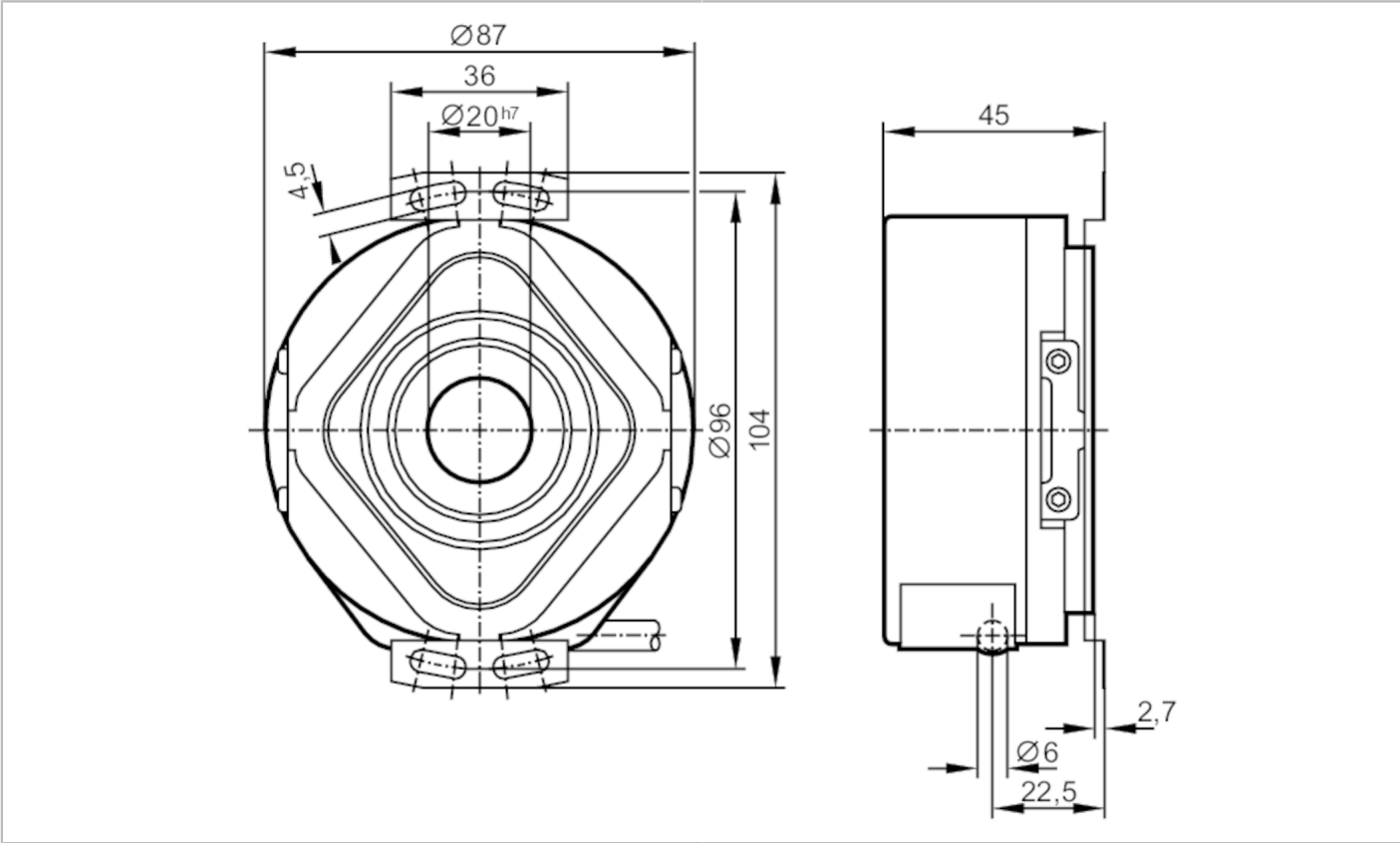
RP1302



Incremental encoder with hollow shaft

RP-0200-I05/N10

Article no longer available - archive entry



| Product characteristics | | |
|------------------------------|-------|---|
| Resolution | | 200 resolution |
| Shaft design | | continuous hollow shaft |
| Shaft diameter | [mm] | 20 |
| Electrical data | | |
| Operating voltage tolerance | [%] | 10 |
| Operating voltage | [V] | 5 DC |
| Current consumption | [mA] | < 150 |
| Outputs | | |
| Electrical design | | TTL |
| Max. current load per output | [mA] | 20 |
| Switching frequency | [kHz] | 300 |
| Phase difference A and B | [°] | 90 |
| Measuring/setting range | | |
| Resolution | | 200 resolution |
| Operating conditions | | |
| Ambient temperature | [°C] | -30...60 |
| Note on ambient temperature | | higher temperature upon request |
| | | for the diagram see the installation instructions |



Incremental encoder with hollow shaft

RP-0200-105/N10

| | | |
|----------------------------|------|-----------|
| Storage temperature | [°C] | -30...100 |
| Max. relative air humidity | [%] | 98 |
| Protection | | IP 64 |

Tests / approvals

| | | |
|----------------------|--------------|----------------------|
| Shock resistance | | 100 g (6 ms) |
| Vibration resistance | EN 60068-2-6 | 200 g (50...2000 Hz) |

Mechanical data

| | | |
|-------------------------------|---------|-------------------------|
| Dimensions | [mm] | Ø 87 / L = 45 |
| Materials | | aluminium |
| Max. revolution, mechanical | [U/min] | 6000 |
| Max. starting torque | [Nm] | 10 |
| Reference temperature torque | [°C] | 20 |
| Shaft design | | continuous hollow shaft |
| Shaft diameter | [mm] | 20 |
| Shaft fit | | H7 |
| Shaft material | | steel (1.4104) |
| Installation depth of shaft | [mm] | 10 |
| Max. axial shaft misalignment | [mm] | 1,5 |

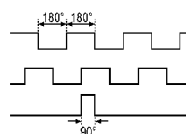
Electrical connection

Cable: 1 m, PUR; radial

| | |
|-------------|------------------|
| brown | A |
| green | A inverted |
| grey | B |
| pink | B inverted |
| red | 0 index |
| black | 0 index inverted |
| blue | L+ sensor |
| white | 0V sensor |
| brown/green | L+ (Up) |
| white/green | 0V (Un) |
| lilac | failure inverted |
| screen | housing |

Diagrams and graphs

Pulse diagram



direction of rotation clockwise (looking at the shaft)