

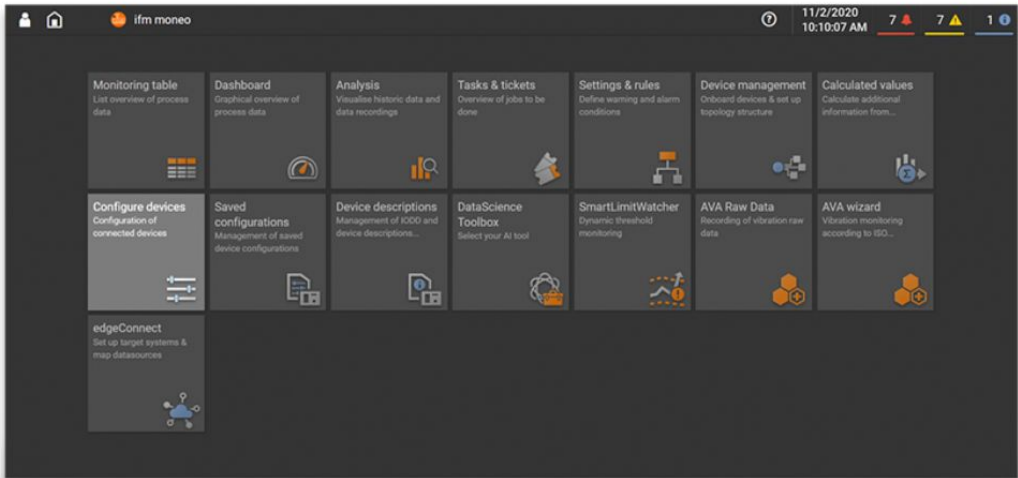


On-premises licence for the GSDML parameter setting  
add-on

moneo configure PLC tools LIC

for use with GSDML files of ifm IO-Link masters type AL140x and AL1304 to AL1307

moneo|configure PLC Toolbox



Application	
Application	for use with GSDML files of ifm AL14xx IO-Link masters
Application	extension of an ifm AL14xx IO-Link master GSDML file by IO-Link device parameters
Configuration	creation of a GSDML file
Compatibility	compatible with GSDML files of the AL14xx series and all IO-Link devices according to the current IO-Link specification
Data management	integration of IO-Link device parameters into the selected GSDML file
Parameter setting	writing selected device parameters into a subslot of the GSDML file
	display of already integrated IO-Link devices



## On-premises licence for the GSDML parameter setting add-on

moneo configure PLC tools LIC

User interface	the user interface is integrated into the dashboard function of moneo configure (SA)
	display of all integrations already effected and of the current action
	indication of memory still free and memory already used, per subslot
	indication of currently selected parameters
IO-Link functions	user-specific selection of the required IO-Link parameters to be integrated
<b>Software / programming</b>	
Language	German; English; French; Italian; Spanish; Portuguese; Chinese; Japanese; Korean; Polish
Data carrier	download
Type of licence	single licence
Licence class	on-premises full version
<b>System requirements</b>	
Min. CPU cycle	2,3 GHz
Min. number of CPU cores	4
Min. RAM	8 GB
Min. graphic resolution	1920 x 1080
Required device interface	USB; LAN Adapter - RJ45
Network card	Ethernet 1 Gbit
Network protocol	Ethernet TCP/IP
Operating system	Microsoft Windows 10 64 Bit; Microsoft Windows Server 2016; Microsoft Windows Server 2019; Microsoft Windows Server 20H2
Web browser	Google Chrome; Mozilla Firefox; (supported versions: see current release notes)
Additionally required software	moneo software download
	moneo configure free
	moneo configure