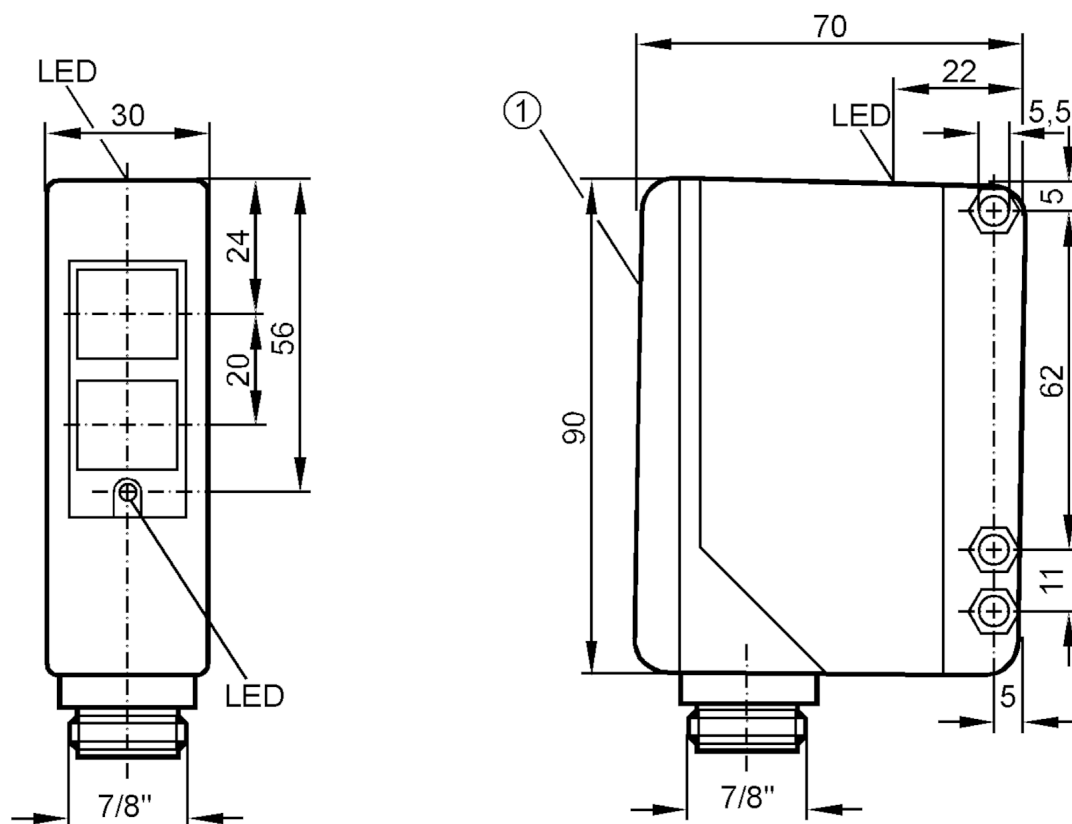




Through-beam sensor transmitter

OAS-000A/LS500L/25M



1 selection switch and potentiometer under cover

Product characteristics

Housing rectangular

Application

Function principle Through-beam sensor

Electrical data

Frequency AC	[Hz]	47...63
Operating voltage	[V]	20...250 AC/DC
Max. power consumption	[VA]	3.5
Protection class		II

Outputs

Short-circuit protection	no
Overload protection	no

Detection zone

Transmitter / receiver	transmitter
Range	[m] 25
Range adjustable	yes

Operating conditions

Ambient temperature	[°C] -25...60
Protection	IP 65

OA3513



Through-beam sensor transmitter

OAS-000A/LS500L/25M

Mechanical data		
Weight	[g]	335.658
Housing		rectangular
Dimensions	[mm]	90 x 30 x 70
Materials		PBT
Lens material		PMMA
Lens alignment		side lens

Displays / operating elements		
Display	operation	1 x LED, red

Accessories		
Items supplied		Angle bracket
		screwdrivers

Remarks	
Pack quantity	1 pcs.

Electrical connection

Connector: 1 x 7/8"; coding: A



Connection

