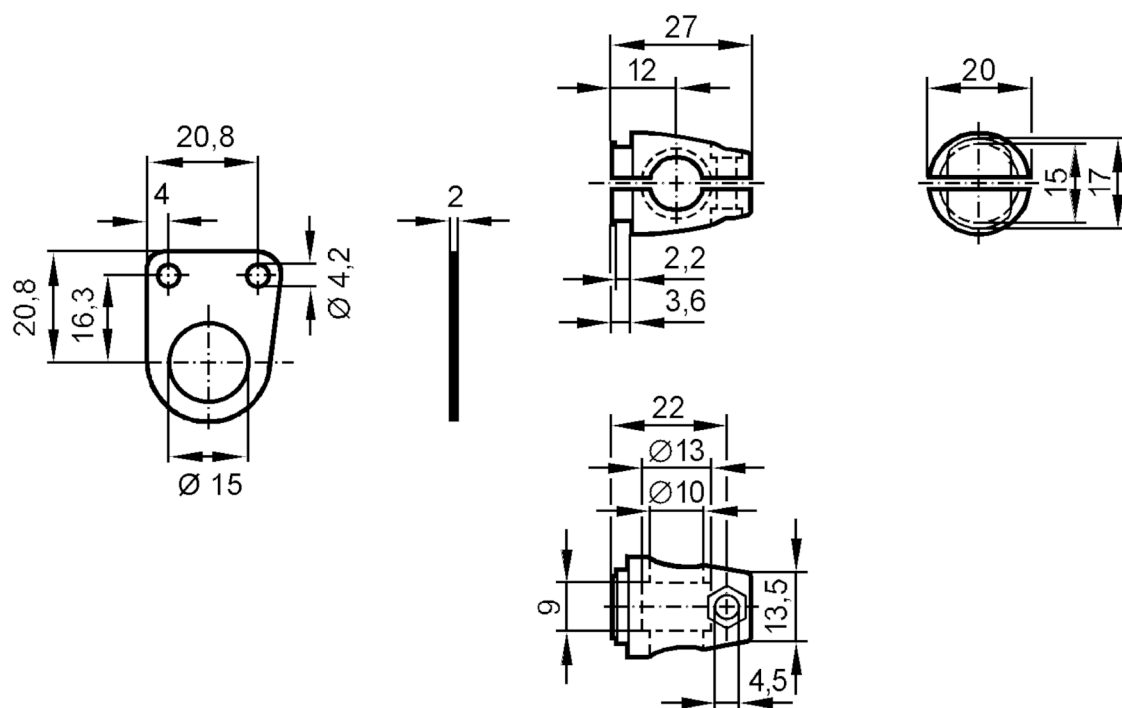


Mounting set for photoelectric sensors

SYSTEM COMPONENT OC BOLT

Article no longer available - archive entry



Application

Design

clamp mounting

Mechanical data

Weight

[g]

86.8

Type of mounting

free-standing; (M8)

Materials

fixture: stainless steel (316Ti/1.4571); Clamp: diecast zinc

Accessories

Items supplied

screw: 1 x M8 x 40

Remarks

Pack quantity

1 pcs.