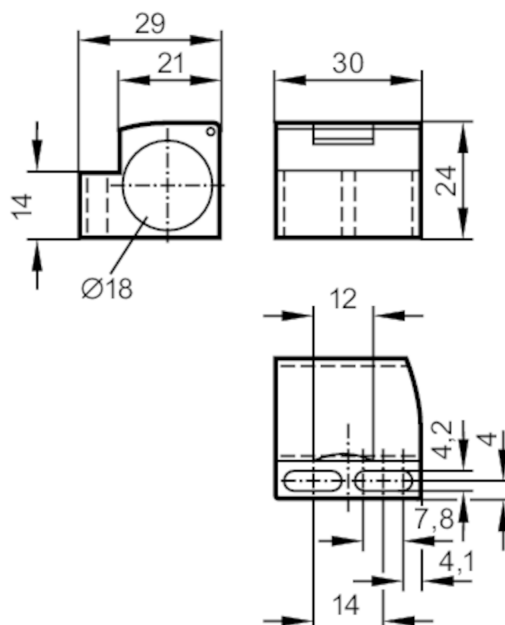


# E11995



## Mounting clamp for position sensors

MOUNTING CLAMP M18



### Application

Design

with end stop

Installation

for sensors with 45° chamfer

### Operating conditions

Ambient temperature

[°C]

-25...85

### Mechanical data

Weight

[g]

12.5

Dimensions

[mm]

24 x 30 x 29

Inside diameter

[mm]

18

Materials

PC

### Remarks

Pack quantity

1 pcs.