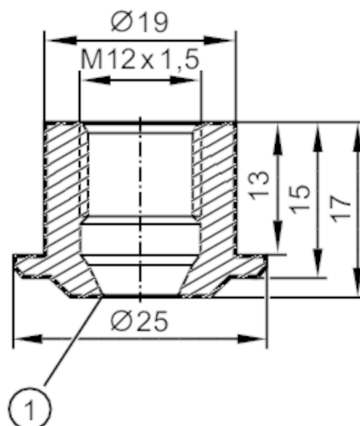




## Welding adapter for process sensors

ADAPT M12-WELDING SHOULDER ACCESSORY



1 sealing edge

EC 1935/2004 

### Application

Medium temperature	[°C]	< 250
Pressure rating	[bar]	50

### Tests / approvals

Pressure Equipment Directive	A possible classification to PED depends on the application and has to be carried out by the user / operator.
Safety instructions	The compatibility between medium and product material has to be checked in all applications.

### Mechanical data

Weight	[g]	36.2
Materials		stainless steel (316L/1.4404)
Tightening torque	[Nm]	5...20
Sensor connection		M12 x 1,5 sealing cone
Process connection		welding adapter Ø 25 mm

### Remarks

Pack quantity	1 pcs.
---------------	--------