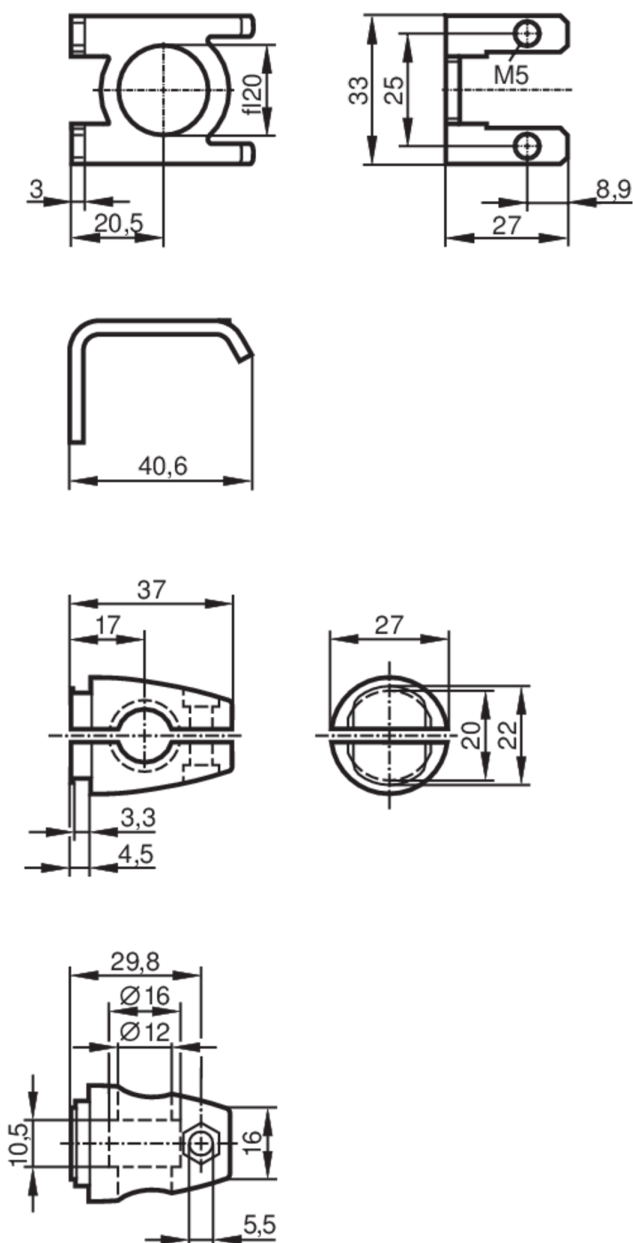


E21211



Mounting set for photoelectric sensors

O5 MOUNTING BRACKET 200



| Application | |
|------------------|---|
| Design | clamp mounting |
| Mechanical data | |
| Weight [g] | 105.5 |
| Type of mounting | Mounting rod; (Ø 12 mm) |
| Materials | stainless steel (316Ti/1.4571); Clamp: diecast zinc |
| Accessories | |
| Items supplied | cylinder screws: 2 x M5 x 8 |
| Remarks | |
| Pack quantity | 1 pcs. |