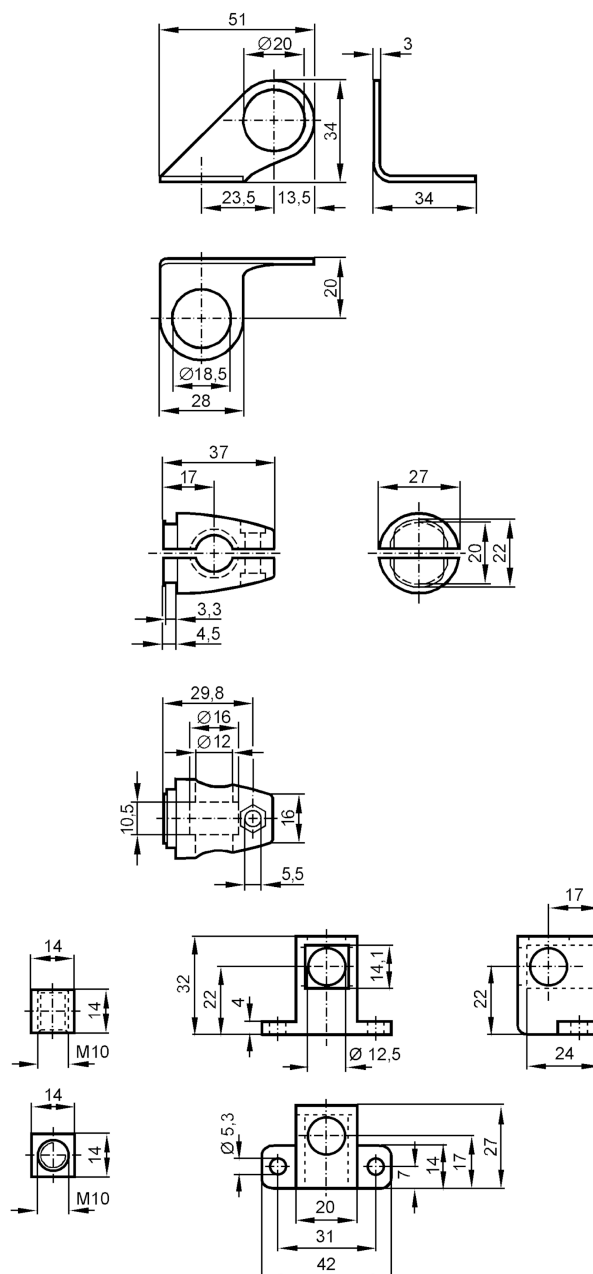




Mounting set for position sensors

SYSTEM COMPONENT M18 RAIL



Application	
Design	clamp mounting
Mechanical data	
Weight [g]	270
Type of mounting	aluminium profile
Dimensions [mm]	Ø 18.5
Materials	fixture: stainless steel (316Ti/1.4571); Clamp: diecast zinc; CUBE: diecast zinc
Accessories	
Items supplied	head cap screw: 1 x M10 x 55
Remarks	
Pack quantity	1 pcs.