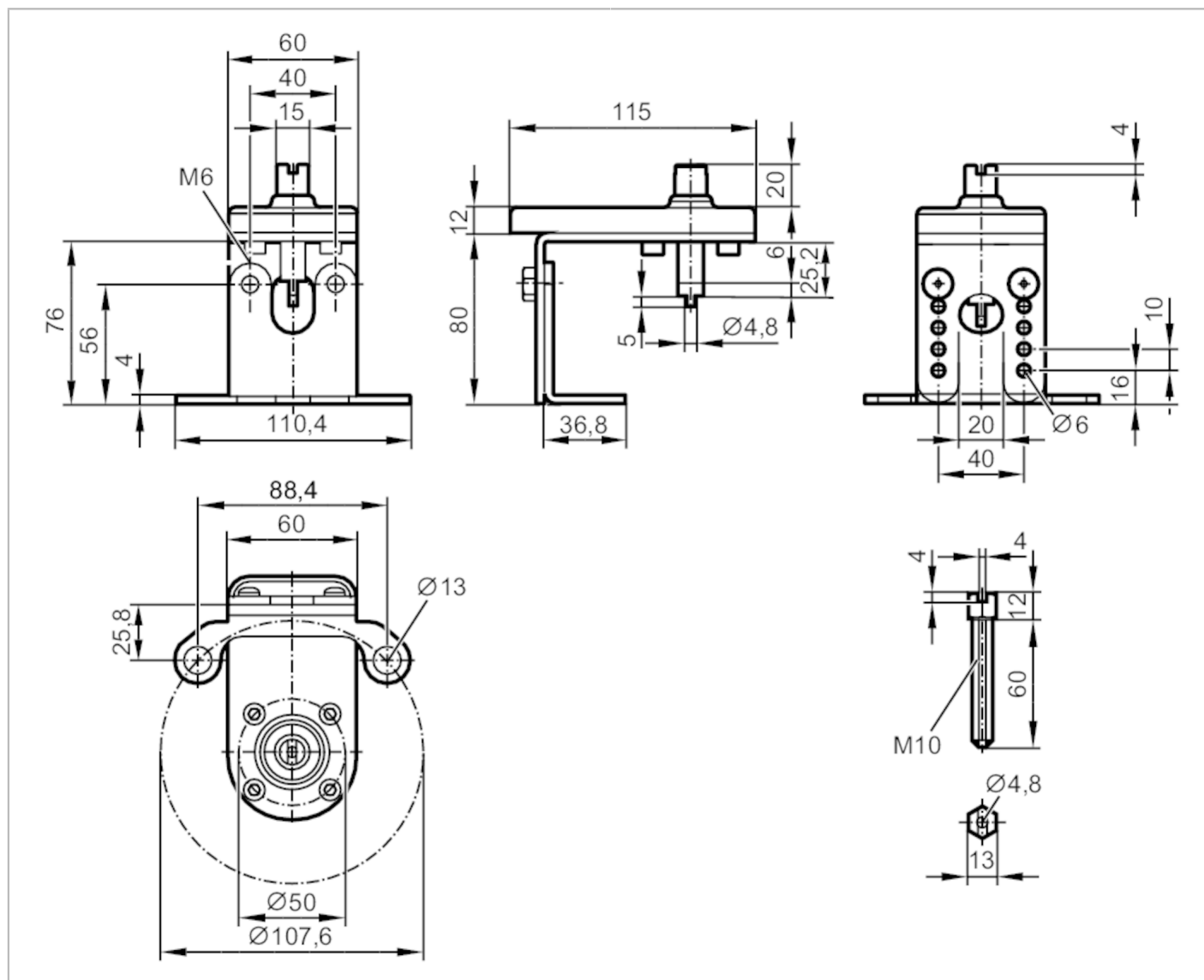


Mounting set for manual valves and ball valves

MOUNTING KIT FOR MANUAL VALVES F12/M10



Application

Design

for types IND, INE

Operating conditions

Ambient temperature

[°C]

-30...80

Mechanical data

Weight

[g]

592.5

Top flange diameter

[mm]

125

ISO top flange type

F12

Shaft extension

M10

Materials

Mounting plate: plastics; metal parts: stainless steel (304/1.4301)

Remarks

Pack quantity

1 pcs.