

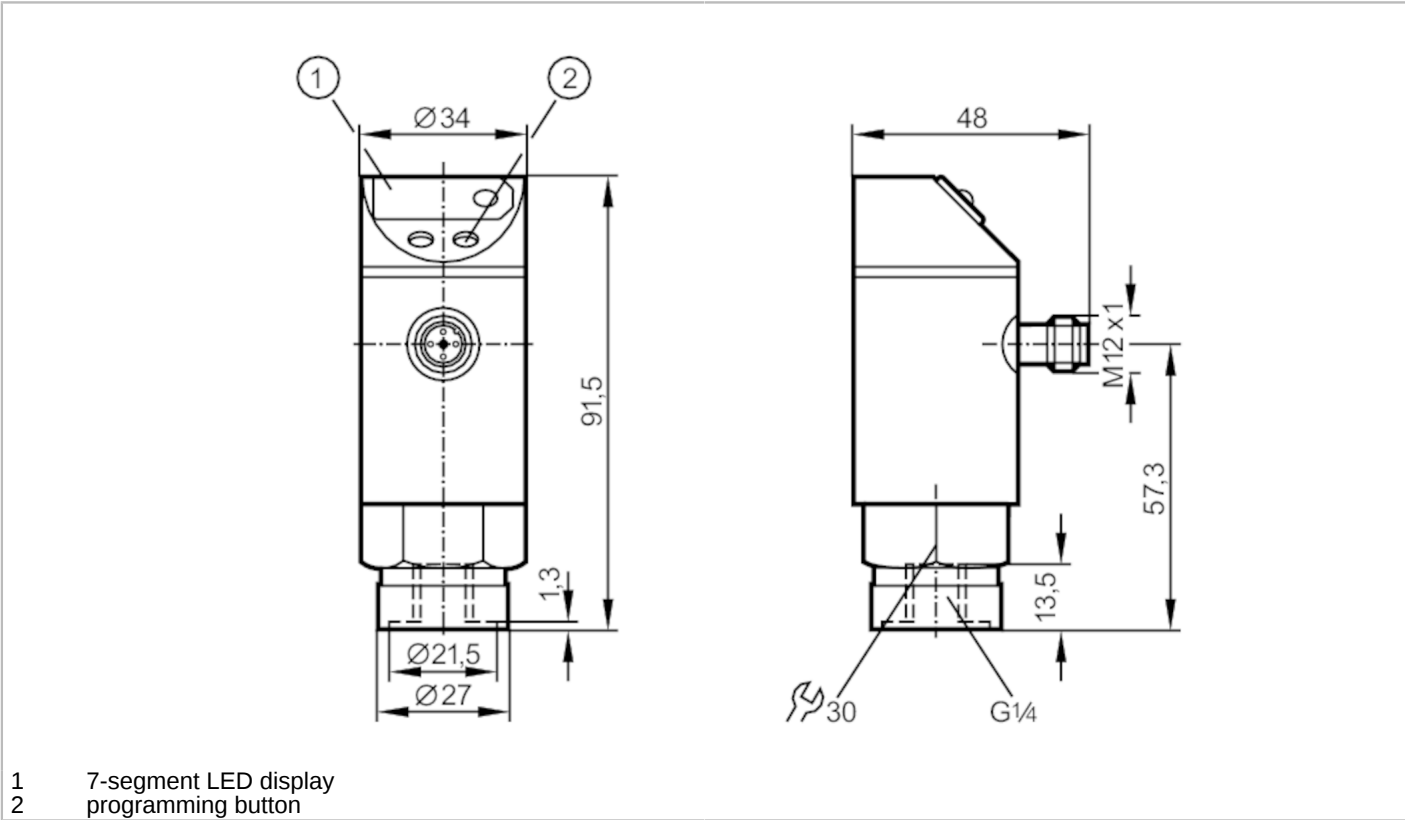


Pressure sensor with display

PN-025-SBR14-KFPKG/US/ IV

Article no longer available - archive entry

Alternative articles: PN3003
When selecting an alternative article and accessories please note that technical data may differ!



Product characteristics	
Number of inputs and outputs	Number of digital outputs: 1; Number of analogue outputs: 1
Measuring range [bar]	0...25
Process connection	threaded connection G 1/4 internal thread
Application	
Application	for industrial applications
Media	liquids and gases
Medium temperature [°C]	-25...80
Min. bursting pressure [bar]	350
Pressure rating [bar]	100
Type of pressure	relative pressure
Electrical data	
Operating voltage [V]	20...30 DC
Current consumption [mA]	< 60
Inputs / outputs	
Number of inputs and outputs	Number of digital outputs: 1; Number of analogue outputs: 1



Pressure sensor with display

PN-025-SBR14-KFPKG/US/ IV

Outputs									
Total number of outputs	2								
Output signal	switching signal; analogue signal; (configurable)								
Electrical design	PNP								
Number of digital outputs	1								
Max. voltage drop switching output DC [V]	2								
Permanent current rating of switching output DC [mA]	250								
Number of analogue outputs	1								
Analogue current output [mA]	4...20								
Max. load [Ω]	500								
Measuring/setting range									
Measuring range [bar]	0...25								
Set point SP [bar]	1.25...25								
Reset point rP [bar]	0.75...24.5								
In steps of [bar]	0.25								
Accuracy / deviations									
Switch point accuracy [% of the final value]	< ± 2,0								
Repeatability [% of the final value]	< ± 0,25; (with temperature fluctuations < 10 K)								
Characteristics deviation [% of the final value]	< ± 2,0								
Temperature drift per 10 K	< ± 0.3								
Response times									
Switching frequency for a given set response time of one output	Response[ms] time (dAP)	15	20	30	50	90	170	330	
	Switching [Hz] frequency	50	35	30	20	15	9	5	
Response time [ms]	at rectangular pressure characteristic; switch point (SPx) = 70 %; reset point (rPx) = 30 %								
Delay time programmable dS, dr [s]	0, 0,2, 0,4,...3								
Software / programming									
Adjustment of the switch point	programming button								
Operating conditions									
Ambient temperature [°C]	-25...80								
Storage temperature [°C]	-40...100								
Protection	IP 67								
Tests / approvals									
EMC	IEC 801/2 ESD				4 kV CD / 8 kV AD				
	IEC 801/3 HF				10 V/m				
	IEC 801/4 Burst				2 kV				

PN8023



Pressure sensor with display

PN-025-SBR14-KFPKG/US/ /V

Mechanical data		
Materials	brass nickel-plated; PBT; PC; PA	
Materials (wetted parts)	brass nickel-plated; ceramics; FKM; NBR; EPDM/X	
Min. pressure cycles	100 million	
Process connection	threaded connection G 1/4 internal thread	
Displays / operating elements		
Display	switching status	LED, red
	function display	7-segment LED display
	measured values	7-segment LED display
Remarks		
Pack quantity	1 pcs.	

Electrical connection

Connector: 1 x M12; coding: A

