

O1D405



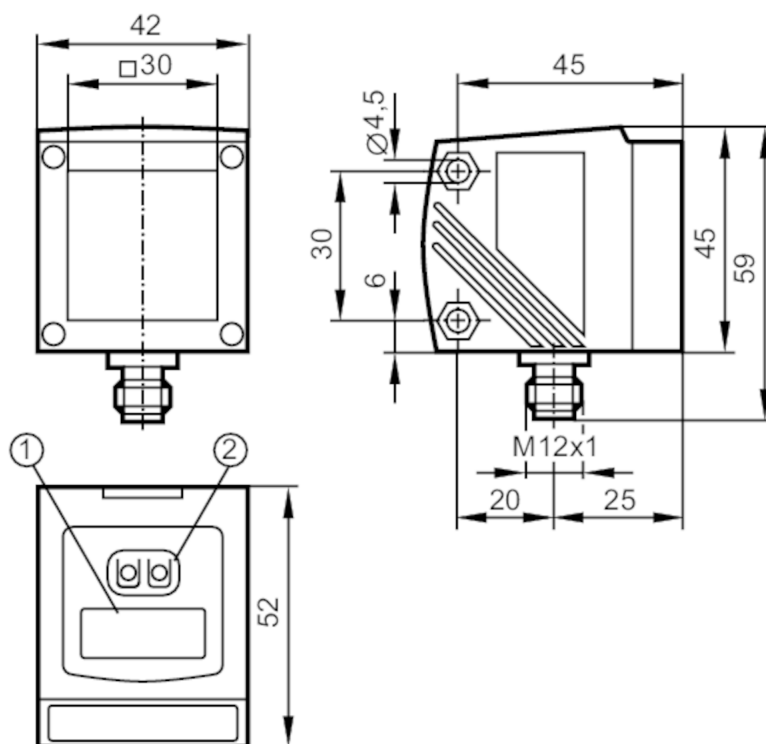
Photoelectric distance sensor

O1DLF3KG

Article no longer available - archive entry

Alternative articles: O1D105

When selecting an alternative article and accessories please note that technical data may differ!



- 1 alphanumeric display 4-digit
2 programming buttons



Product characteristics

Laser protection class	2
Housing	rectangular

Electrical data

Operating voltage [V]	18...30 DC
Current consumption [mA]	< 150
Protection class	III
Reverse polarity protection	yes
Typ. lifetime [h]	50000

Inputs / outputs

Number of inputs and outputs	Number of digital outputs: 2; Number of analogue outputs: 1
------------------------------	---

Outputs

Total number of outputs	2
Electrical design	PNP
Number of digital outputs	2

O1D405



Photoelectric distance sensor

O1DLF3KG

Output function	normally open / normally closed; (programmable)	
Max. current load per output [mA]	200	
Number of analogue outputs	1	
Analogue current output [mA]	4...20; (IEC 61131-2)	
Max. load [Ω]	250	
Analogue voltage output [V]	0...10; (IEC 61131-2)	
Min. load resistance [Ω]	5000	
Short-circuit protection	yes	
Type of short-circuit protection	pulsed	
Overload protection	yes	
Detection zone		
Max. light spot width [mm]	15	
Max. light spot height [mm]	15	
Light spot dimensions refer to	10 m	
Background suppression [m]	10...100	
Measuring/setting range		
Measuring range [m]	0.2...10; (white paper 200 x 200 mm 90% remission)	
Sampling rate [Hz]	1...33	
Operating conditions		
Ambient temperature [°C]	-10...60	
Protection	IP 67	
Max. immunity to extraneous light [klx]	100	
Tests / approvals		
EMC	EN 60947-5-2	
Laser protection class	2	
Notes on laser protection	Caution:	laser light
	Power:	<= 4,1 mW
	Wave length:	650 nm
	pulse:	1,3 ns
	Do not stare into beam.	
	Avoid exposure to the laser light.	
	laser class:	2
	EN 60825-1:2003-10	
Mechanical data		
Weight [g]	294.8	
Housing	rectangular	
Dimensions [mm]	59 x 42 x 52	
Materials	housing: diecast zinc; front pane: glass; LED window: PC	
Lens alignment	side lens	
Displays / operating elements		
Display	switching status	2 x LED, yellow
	operation	LED, green
	distance value, programming	alphanumeric display, 4-digit

O1D405



Photoelectric distance sensor

O1DLF3KG

Accessories	
Accessories (optional)	Protective cover, E21133 Mounting bracket
Remarks	
Remarks	operating voltage "supply class 2" according to cULus
Pack quantity	1 pcs.

Electrical connection

Connector: 1 x M12; coding: A



Connection

