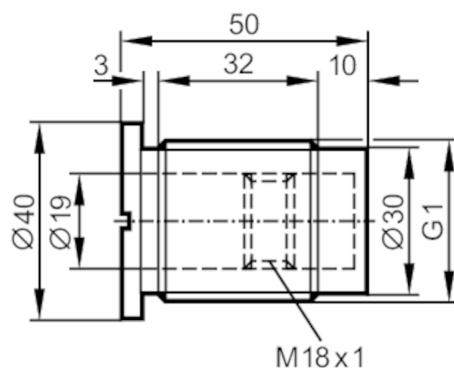


E43904



Mounting adapter for capacitive sensors

MOUNTING CAP G1", POM



Application

Pressure rating [bar] 8

Operating conditions

Ambient temperature [°C] -25...80

Mechanical data

Weight [g] 40

Dimensions [mm] G 1 / L = 50

Thread designation G 1

Materials Adapter: POM

Tightening torque [Nm] 5

Sensor connection threaded connection M18 x 1 internal thread

Process connection threaded connection G 1 external thread

Remarks

Pack quantity 1 pcs.