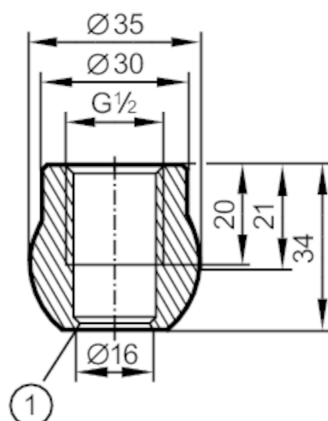




## Welding adapter for process sensors

ADAPT G1/2-WELDING SPHERICAL



1 sealing edge

EC 1935/2004 EHEDG Tested **FCM** **FDA****Application**

Pressure rating	[bar]	50
Note on pressure rating	for the connection sensor - adapter	

**Tests / approvals**

Pressure Equipment Directive	A possible classification to PED depends on the application and has to be carried out by the user / operator.	
Safety instructions	The compatibility between medium and product material has to be checked in all applications.	

**Mechanical data**

Weight	[g]	164.5
Materials	stainless steel (316L/1.4435)	
Sensor connection	G 1/2 sealing cone	
Process connection	welding adapter Ø 35 mm	

**Remarks**

Pack quantity	1 pcs.	
---------------	--------	--