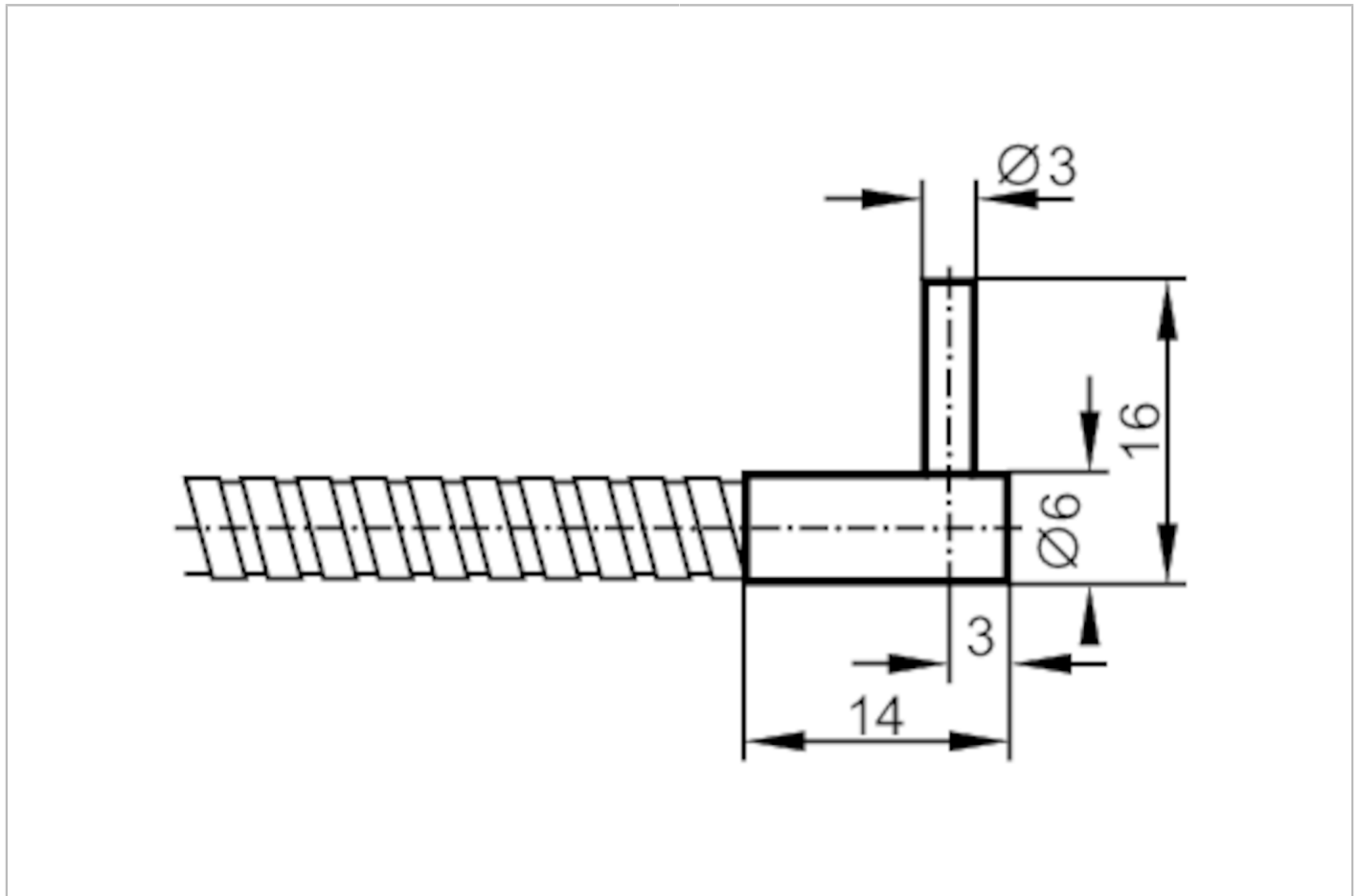


E20129



Fibre optic through-beam sensor

FE-00-A-A-R3



Application	
Function principle	Through-beam sensor
Application	High temperature resistance; Robust design for use in harsh industrial environments
Detection zone	
Range with fibre optic amplifier type	OCF; OKF; OOF; OUF
OCF (High Power)	
Range of fibre optics [mm]	990
OKF	
Range of fibre optics [mm]	120
OOF	
Range of fibre optics [mm]	400
OUF	
Range of fibre optics [mm]	120
Operating conditions	
Ambient temperature [°C]	-40...290

E20129



Fibre optic through-beam sensor

FE-00-A-A-R3

Mechanical data	
Weight [g]	69
Version of sensing head	angled
Sensing head diameter [mm]	3
Sensing head length [mm]	10
Total length [mm]	600
Min. bending radius [mm]	20; (for fixed installation)
Fibre arrangement	
Materials	Adapter: ABS
Fibre material	glass
Fibre head material	aluminium
Fibre sheath material	aluminium
Accessories	
Items supplied	E20103
Remarks	
Pack quantity	1 pcs.