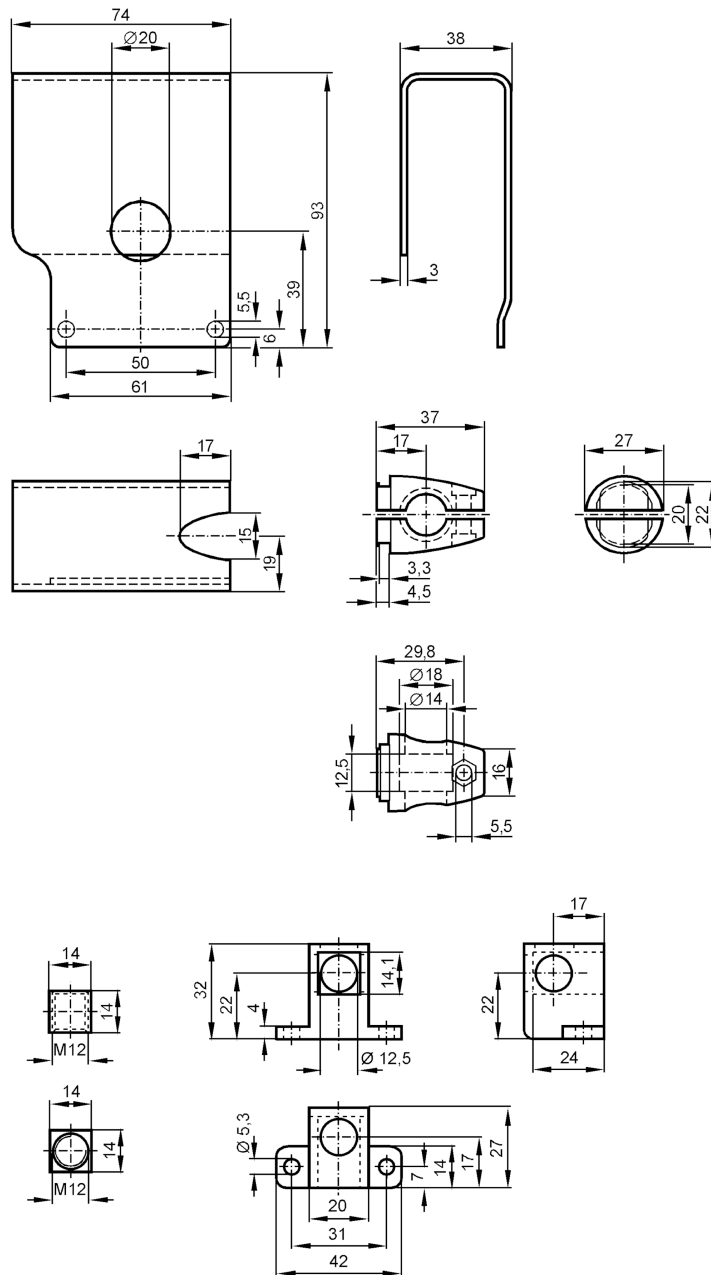




Mounting set with protective cover for photoelectric sensors

SYSTEM COMPONENT OL RAIL

Article no longer available - archive entry



Application

Design	clamp mounting, with protective cover
--------	---------------------------------------

Mechanical data

Weight	[g]	623.6
Type of mounting		aluminium profile
Materials		Clamp: diecast zinc; fixture: stainless steel (316Ti/1.4571); CUBE: diecast zinc

Accessories

Items supplied	screw: 1 x M12 x 120
----------------	----------------------

Remarks

Pack quantity	1 pcs.
---------------	--------