

CR3130



CANwireless with integrated antenna

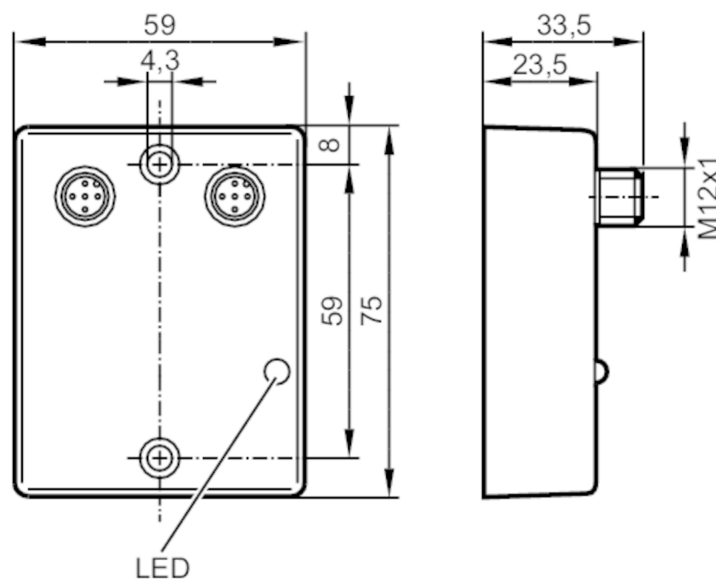
CANwireless/WLAN/Bt

Article no longer available - archive entry

Alternative articles: CR3132

When selecting an alternative article and accessories please note that technical data may differ!

Please do not use for new projects.



Electrical data

Operating voltage	[V]	8...32 DC
Current consumption	[mA]	< 60

Interfaces

Number of CAN interfaces	1
Number of R232 interfaces	1

Operating conditions

Protection	IP 67
------------	-------

Mechanical data

Weight	[g]	120.5
Dimensions	[mm]	75 x 59 x 33.5
Materials		PA

Displays / operating elements

Display	status	1 x LED
---------	--------	---------

Accessories

Items supplied	Protective cap: M12
----------------	---------------------

Remarks

Remarks	Singapore Not approved for operation, for export only.
---------	--

CR3130



CANwireless with integrated antenna

CANwireless/WLAN/Bt

Notes	Please do not use for new projects.
Pack quantity	1 pcs.
Electrical connection	
Connector: 1 x M12	