

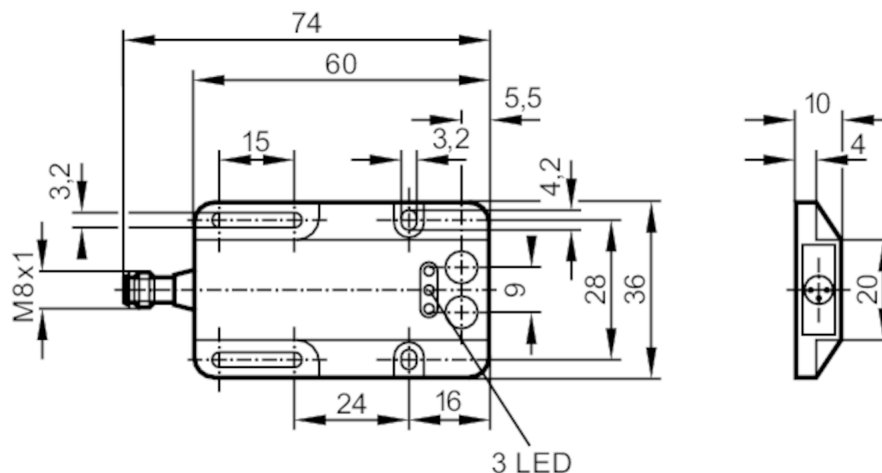
Through-beam sensor transmitter

OWS-00KG/AS

Article no longer available - archive entry

Alternative articles: OJ5008

When selecting an alternative article and accessories please note that technical data may differ!



transmitter in lower lens

Product characteristics

Type of light	red light
Housing	rectangular

Application

Function principle	Through-beam sensor
--------------------	---------------------

Electrical data

Operating voltage	[V]	10...36 DC
Current consumption	[mA]	15; ((36 V))
Protection class		III
Reverse polarity protection		yes
Type of light		red light
Wave length	[nm]	660

Outputs

Overload protection	yes
---------------------	-----

Detection zone

Transmitter / receiver	transmitter
Range [m]	< 4
Max. light spot diameter [mm]	320
Light spot dimensions refer to	at maximum range

Operating conditions

Ambient temperature	[°C]	-25...60
Protection		IP 65

Tests / approvals

EMC	EN 60947-5-2	
	EN 55011	class B

OW1010



Through-beam sensor transmitter

OWS-OOKG/AS

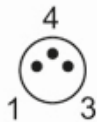
Mechanical data		
Housing		rectangular
Dimensions	[mm]	36 x 60 x 10
Materials		ABS glass fibre reinforced
Lens material		PMMA

Displays / operating elements		
Display	operation	1 x LED, green

Remarks		
Pack quantity		1 pcs.

Electrical connection

Connector: 1 x M8; coding: A



Connection

