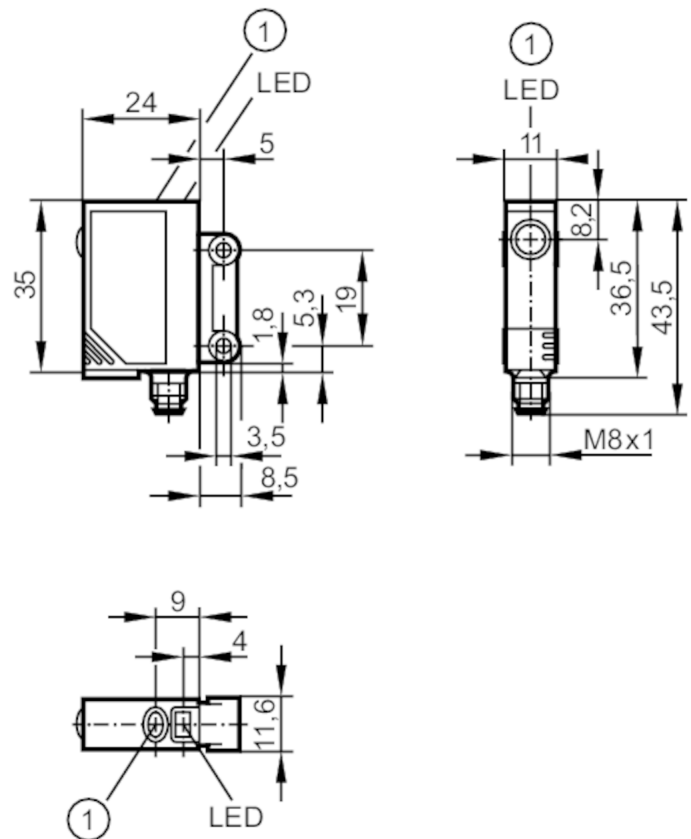




Through-beam laser sensor transmitter

OJSLOOKG/SO/AS



1 pushbutton



Product characteristics		
Type of light		red light
Laser protection class		1
Housing		rectangular
Application		
Function principle		Through-beam sensor
Electrical data		
Operating voltage	[V]	10...30 DC
Current consumption	[mA]	< 12
Protection class		III
Reverse polarity protection		yes
Type of light		red light
Wave length	[nm]	650
Typ. lifetime	[h]	50000
Outputs		
Overload protection		yes
Detection zone		
Transmitter / receiver		transmitter



Through-beam laser sensor transmitter

OJSLOOKG/SO/AS

Range	[m]	< 1
Range adjustable		no
Max. light spot diameter	[mm]	4
Light spot dimensions refer to		at maximum range

Operating conditions

Ambient temperature	[°C]	-10...60
Protection		IP 67

Tests / approvals

EMC	EN 60947-5-2	
Laser protection class		1
Notes on laser protection	Caution:	laser light
	laser class:	1
		EN / IEC60825-1:2007
		EN / IEC60825-1:2014
		Complies with 21 CFR 1040 except for deviations pursuant to Laser Notice No. 50, dated June 2007.
MTTF	[years]	918

Mechanical data

Weight	[g]	27.95
Housing		rectangular
Dimensions	[mm]	35 x 11 x 24
Materials		housing: ABS; LED window: SEPS; pushbutton: SEPS
Lens material		glass
Lens alignment		side lens

Displays / operating elements

Display	operation	1 x LED, green
---------	-----------	----------------

Accessories

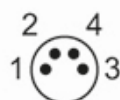
Items supplied	screws: 2
	spring washers: 2
	Nuts: 2

Remarks

Remarks	operating voltage "supply class 2" according to cULus
Pack quantity	1 pcs.

Electrical connection

Connector: 1 x M8; coding: A





Through-beam laser sensor transmitter

OJSLOOKG/SO/AS

Connection

