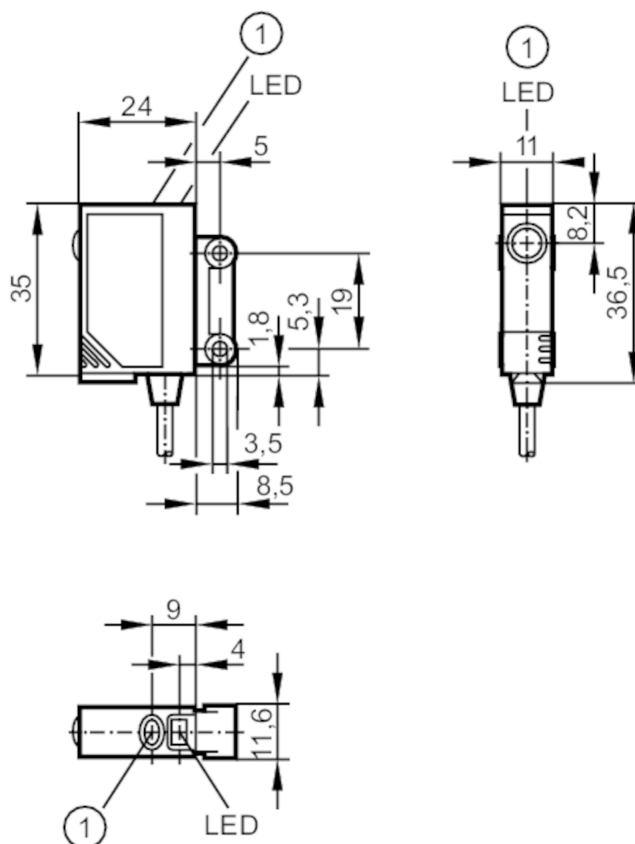


## Through-beam sensor transmitter

OJS-00KG/SO

Article no longer available - archive entry



1 pushbutton without function

## Product characteristics

Type of light	red light
Housing	rectangular

## Application

Function principle	Through-beam sensor
--------------------	---------------------

## Electrical data

Operating voltage	[V]	10...30 DC
Current consumption	[mA]	< 19
Protection class		II
Reverse polarity protection		yes
Type of light		red light
Wave length	[nm]	660

## Outputs

Short-circuit protection	yes
Type of short-circuit protection	pulsed
Overload protection	yes

## Detection zone

Transmitter / receiver	transmitter
------------------------	-------------

# OJ5133



## Through-beam sensor transmitter

OJS-00KG/SO

Range	[m]	< 10
Max. light spot diameter	[mm]	1000
Light spot dimensions refer to		at maximum range

### Operating conditions

Ambient temperature	[°C]	-25...60
Protection		IP 67

### Tests / approvals

EMC	EN 60947-5-2	
-----	--------------	--

### Mechanical data

Housing		rectangular
Dimensions	[mm]	35 x 11 x 24
Materials		housing: ABS; LED window: SEPS; pushbutton: SEPS
Lens material		glass
Lens alignment		side lens

### Displays / operating elements

Display	operation	1 x LED, green
---------	-----------	----------------

### Accessories

Items supplied		screws: 2
		spring washers: 2
		Nuts: 2

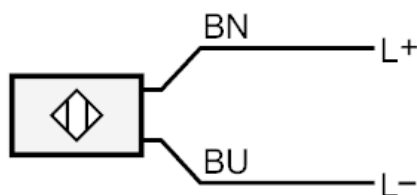
### Remarks

Remarks		operating voltage "supply class 2" according to cULus
Pack quantity		1 pcs.

### Electrical connection

Cable: 2 m, PVC; 4 x 0.14 mm<sup>2</sup>

### Connection



BN = Core colours : brown  
BU = blue