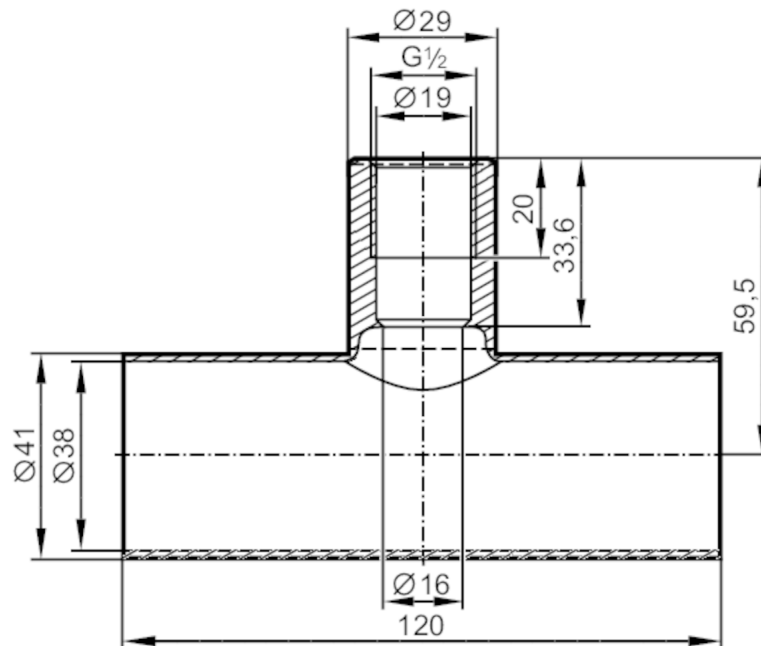


# E43317



## T-piece

T-PIPE/G1/2/L120/DN40



EC 1935/2004 EHEDG Certified **FCM**

### Application

Design	for sensors and adapters with process connection G 1/2 A
Pressure rating [bar]	25

### Mechanical data

Weight [g]	407.5
Materials	stainless steel (1.4404 / 316L)
Surface characteristics Ra/Rz of the wetted parts	0.8 / 4

### Accessories

Accessories (supplied)	O-rings: 1, FKM
------------------------	-----------------

### Remarks

Pack quantity	1 pcs.
---------------	--------