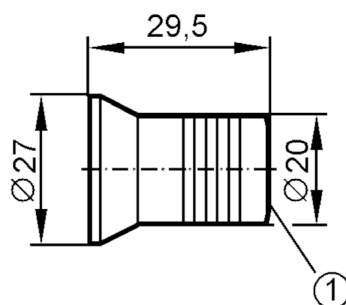


Welding adapter for process sensors

Einschweißmuffe/St52/SA

Article no longer available - archive entry



1 internal thread M16 x 1.5

Tests / approvals

Pressure Equipment Directive

A possible classification to PED depends on the application and has to be carried out by the user / operator.

Safety instructions

The compatibility between medium and product material has to be checked in all applications.

Mechanical data

Dimensions [mm]

M16

Thread designation

M16

Materials

steel (1.0570 / S355J2)

Remarks

Pack quantity

1 pcs.