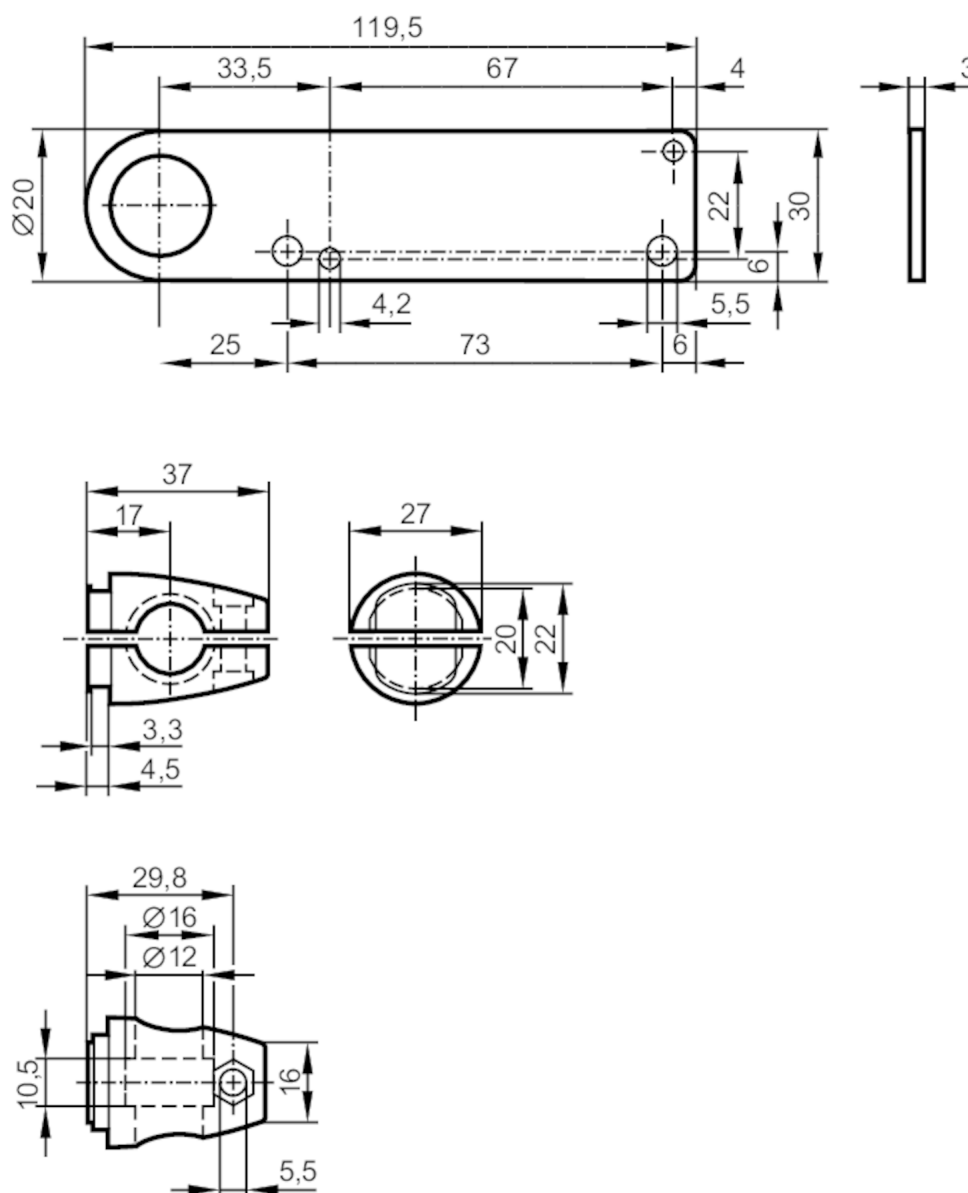


Mounting set for photoelectric sensors

SYSTEM COMPONENT OT BOLT



Application

Design	clamp mounting
--------	----------------

Mechanical data

Weight	[g]	235
Type of mounting		free-standing; (M10)
Materials		fixture: stainless steel (316Ti/1.4571); Clamp: diecast zinc

Accessories

Items supplied	head cap screw: 1 x M10 x 55
----------------	------------------------------

Remarks

Pack quantity	1 pcs.
---------------	--------