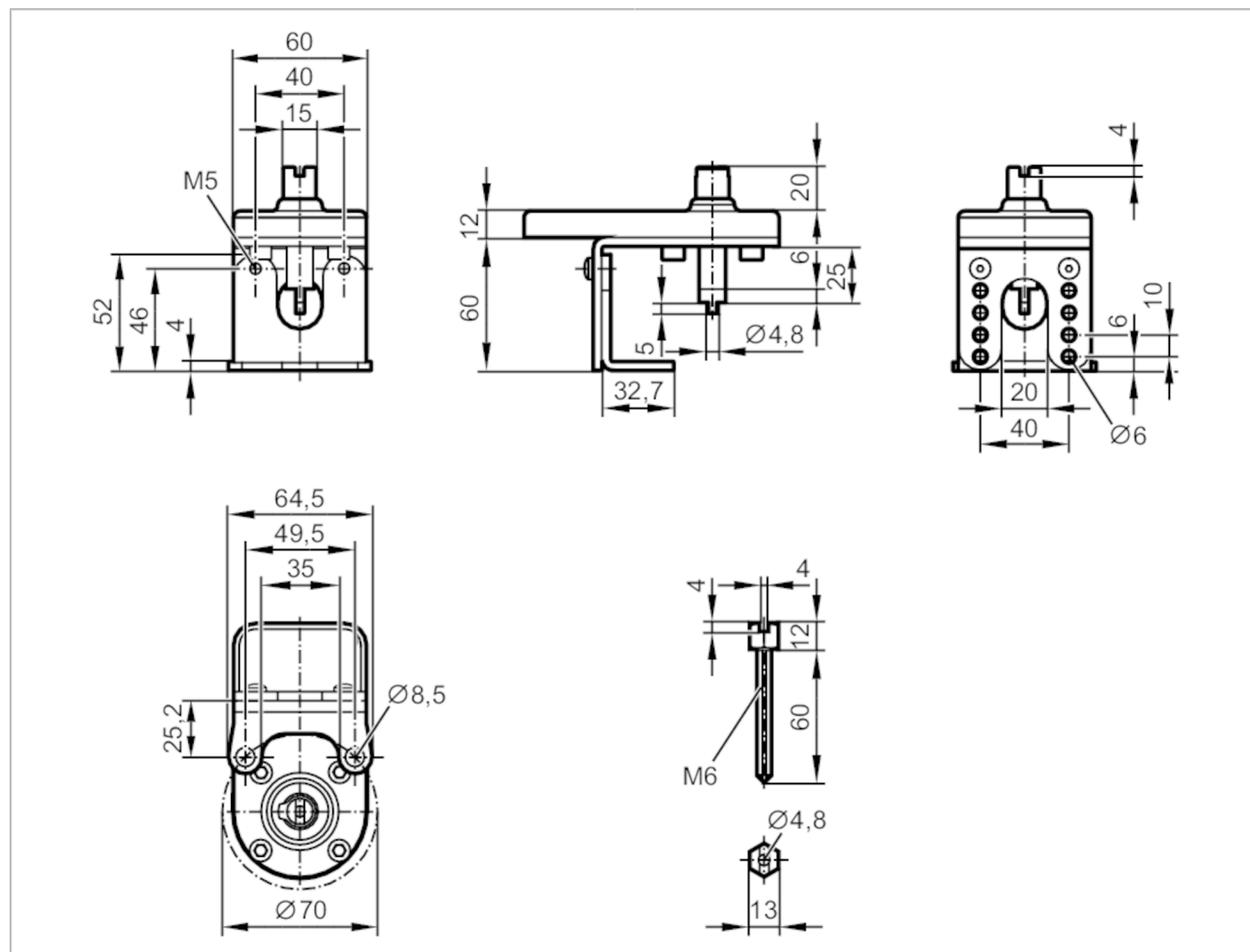


Mounting set for manual valves and ball valves

MOUNTING KIT FOR MANUAL VALVES F07M6



Operating conditions

Ambient temperature	[°C]	-30...80
---------------------	------	----------

Mechanical data

Weight	[g]	465.5
Top flange diameter	[mm]	70
ISO top flange type		F07
Shaft extension		M6
Materials	Mounting plate: plastics; metal parts: stainless steel (304/1.4301)	

Remarks

Pack quantity	1 pcs.
---------------	--------