



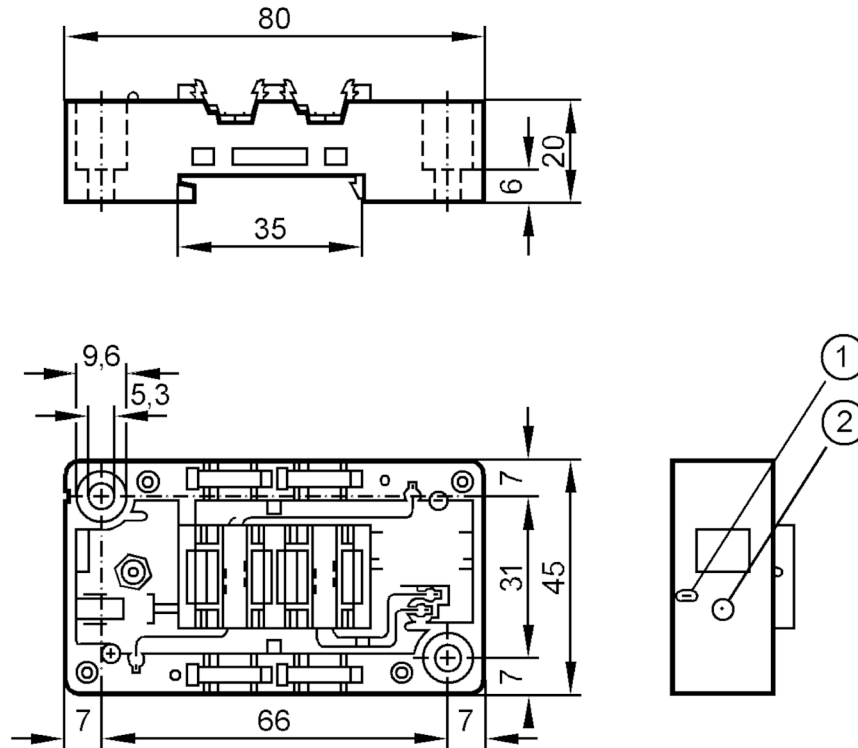
## Lower part for AS-Interface module

EEMS-Base FC Address.socket

Article no longer available - archive entry

Alternative articles: AC5011

When selecting an alternative article and accessories please note that technical data may differ!



- 1 earthing lead
- 2 addressing socket

### Electrical data

Operating voltage	[V]	26.5...31.6 DC
Additional voltage supply	[V]	24 DC

### Outputs

Electrical design	AS-i
Contact rating	< 2 A

### Operating conditions

Ambient temperature	[°C]	-25...85
Protection	IP 67; (depending on the upper part used: IP 20 / IP 65 / IP 67)	

### AS-i classification

AS-i addressing	addressing socket
-----------------	-------------------

### Mechanical data

Housing	housing for DIN rail mounting
Dimensions	[mm] 45 x 80 x 20
Materials	PBT

# AC5023



## Lower part for AS-Interface module

EEMS-Base FC Address.socket

Remarks	
Remarks	recommended sleeve for earthing lead: A 2.8 x 0.5 DIN 46247 Module lower part can be used with upper parts where pin 5 of the M12 socket is connected to functional earth (FE).
Pack quantity	1 pcs.

### Electrical connection

contact pins in module upper part :  
quick mounting technology for AS-i flat cable: