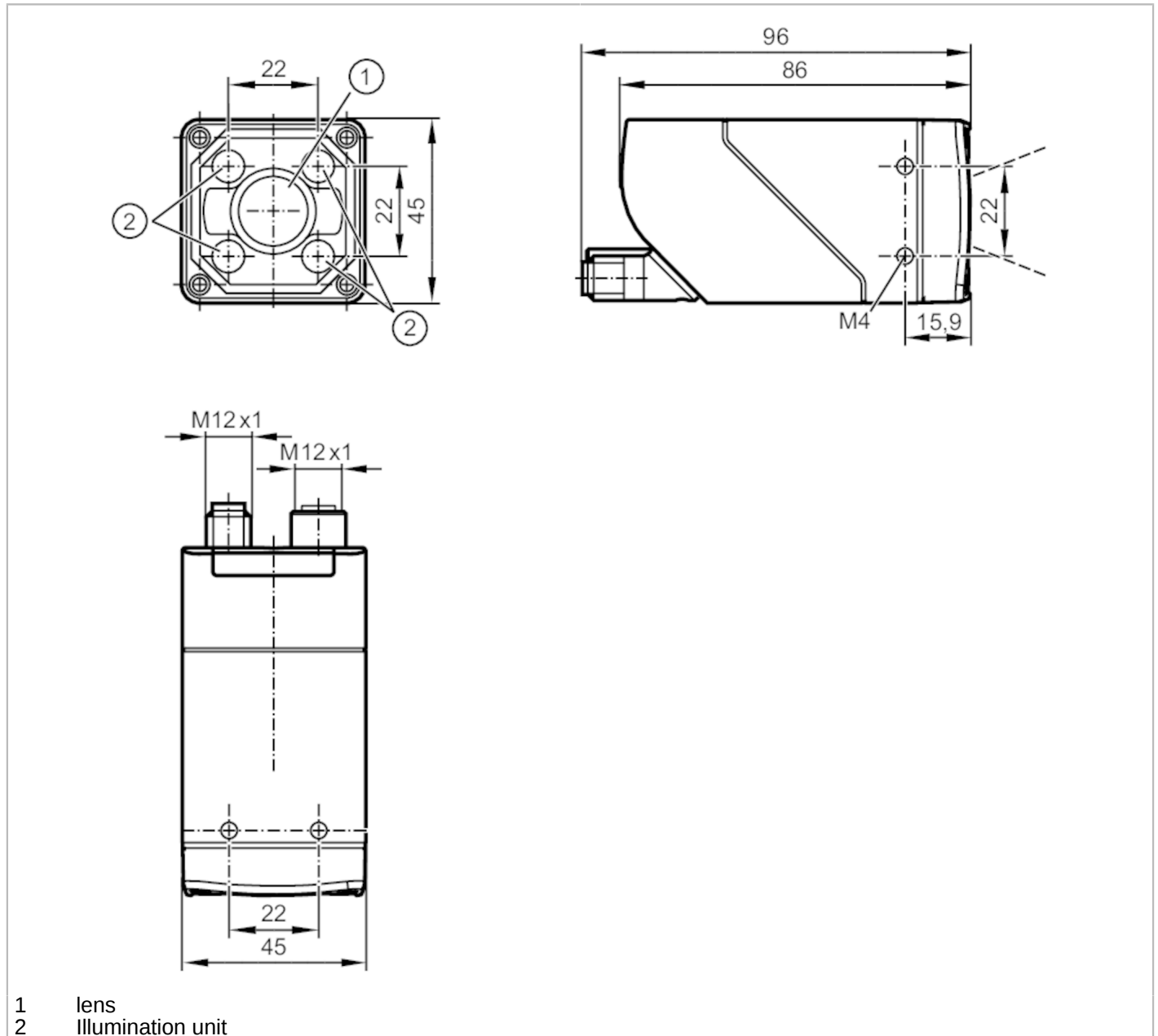


# O2D502



## Object recognition sensor

O2DCRDKG/E1/E2/EF/GM/TB/W/30



- 1 lens
- 2 illumination unit

Product characteristics	
Type of light	RGBW
Image resolution [px]	1280 x 960
Max. reading rate [Hz]	40
Application	
Special feature	polarisation filter

# O2D502



## Object recognition sensor

O2DCRDKG/E1/E2/EF/GM/TB/W/30

Electrical data				
Operating voltage [V]	18...30 DC			
Current consumption [mA]	< 400; (24V DC; with switched outputs: < 900 mA)			
Protection class	III			
Reverse polarity protection	yes			
Type of light	RGBW			
Wave length [nm]	625; 525; 453			
Image sensor	CMOS image sensor black/white			
Inputs / outputs				
Number of inputs and outputs	Number of digital inputs: 3; Number of digital outputs: 5			
Inputs				
Trigger	external; 24 V PNP/NPN (IEC 61131-2 Typ 3); TCP/IP; EtherNet/IP; internal			
Number of digital inputs	3			
Input circuit of digital inputs	24 V PNP/NPN; (type 3 (IEC 61131-2))			
Outputs				
Electrical design	PNP/NPN; (parameterisable)			
Number of digital outputs	5; (configurable)			
Max. voltage drop switching output DC [V]	1			
Max. current load per output [mA]	100			
Short-circuit protection	yes			
Type of short-circuit protection	pulsed			
Overload protection	yes			
Detection zone				
Field of view size [mm]	Operating distance	field of view		
	35	25 x 19		
	300	184 x 138		
	500	304 x 228		
	1000	604 x 453		
	1500	904 x 678		
	2000	1204 x 903		
	2500	1504 x 1128		
Operating distance [mm]	> 35			
Image resolution [px]	1280 x 960			
Lens type	Wide angle			
Polarisation filter available	yes			
Max. reading rate [Hz]	40			
Software / programming				
Parameter setting options	via PC with ifm Vision Assistant			
Interfaces				
Communication interface	Ethernet			

# O2D502



## Object recognition sensor

O2DCRDKG/E1/E2/EF/GM/TB/W/30

Ethernet	
Number of Ethernet interfaces	1
Transmission standard	10Base-T; 100Base-TX
Transmission rate	10 MBit/s; 100 MBit/s
Protocol	TCP/IP; EtherNet/IP
Factory settings	IP address: 192.168.0.69
	subnet mask: 255.255.255.0 (Class C)
	gateway IP address: 192.168.0.201
	MAC address: see type label
Usage type	parameter setting; data transmission

Operating conditions	
Ambient temperature [°C]	-10...50
Storage temperature [°C]	-40...70
Max. relative air humidity [%]	90; (non condensing)
Max. height above sea level [m]	4000
Protection	IP 65
Degree of soiling	2

Tests / approvals		
EMC	EN IEC 61000-6-4 radiation of interference	industrial environments
	EN IEC 61000-6-2 immunity	industrial environments
Shock resistance	EN 60068-2-27	50 g 11 ms / not repetitive
	EN 60068-2-27	40 g 6 ms / repetitive
Vibration resistance	EN 60068-2-6	2 g (10 ... 150 Hz)
Photobiological safety	risk group 1; (EN 62471)	
Electrical protection	EN IEC 61010-2-201	electrical supply only via PELV circuits

Mechanical data	
Weight [g]	621.75
Dimensions [mm]	45 x 45 x 86
Materials	housing: diecast zinc powder-coated; front lens: Gorillaglas; LED window: PC; pushbutton: POM
Sealing material	FKM

Displays / operating elements		
Display	function	2 x LED, green
	function	2 x LED, yellow
	Multi-function button	2 x LED, green/yellow
Operating elements	1	Multi-function button

Accessories	
Accessories (optional)	Mounting accessories
	Protective panes

Remarks	
Pack quantity	1 pcs.

Electrical connection - Ethernet	
Connector: 1 x M12; coding: D; Moulded body: stainless steel; Sealing: FKM	

# O2D502



## Object recognition sensor

O2DCRDKG/E1/E2/EF/GM/TB/W/30

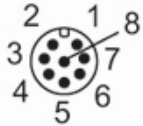


1	TxD+
2	RxD+
3	TxD-
4	RxD-

screen connected

### Electrical connection - supply

Connector: 1 x M12; coding: A; Moulded body: stainless steel



1	24 V DC
2	trigger input
3	GND
4	switching output OUT5
5	switching output OUT3 Ready
6	switching output OUT4
7	switching output OUT1 / IN1
8	switching output OUT2 / IN2