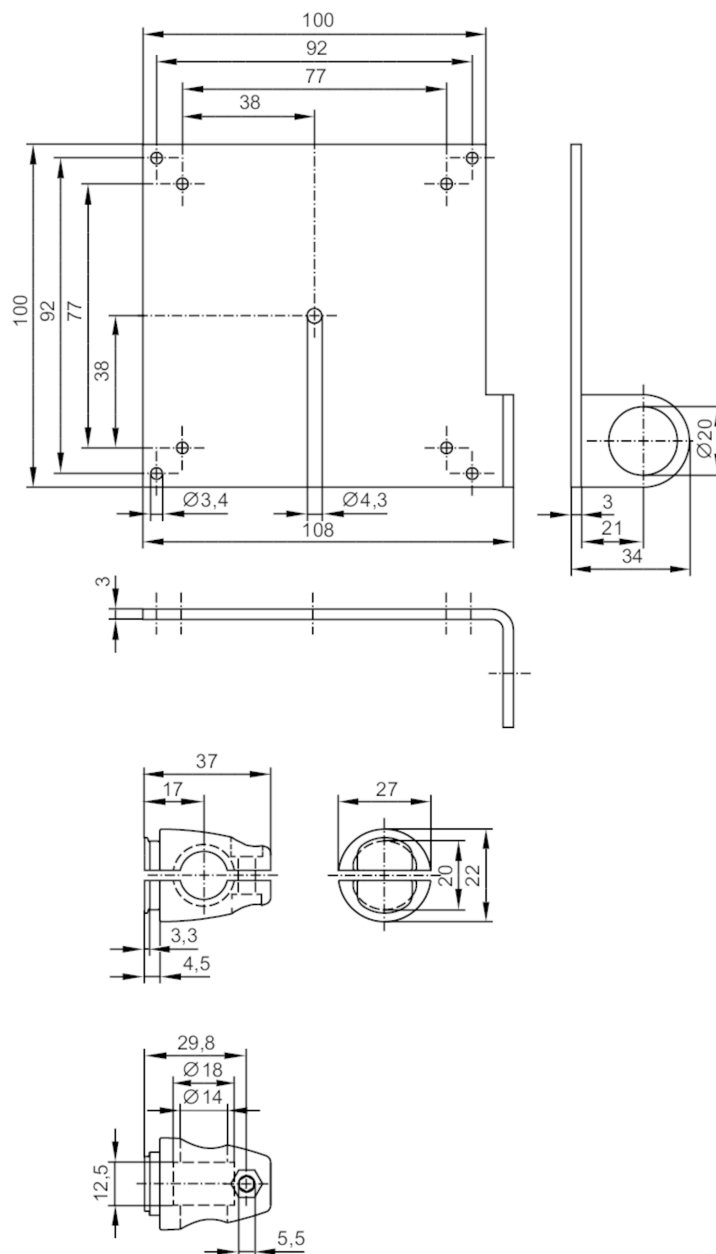


E20934



Mounting set for reflectors

SYSTEM COMPONENT REFL BOLT



Application	
Design	clamp mounting, for reflector, 100 x 100 mm
Mechanical data	
Weight [g]	501
Type of mounting	free-standing; (M12)
Materials	fixture: stainless steel (316Ti/1.4571); Clamp: diecast zinc
Accessories	
Items supplied	screw: 1 x M12 x 120
Remarks	
Pack quantity	1 pcs.