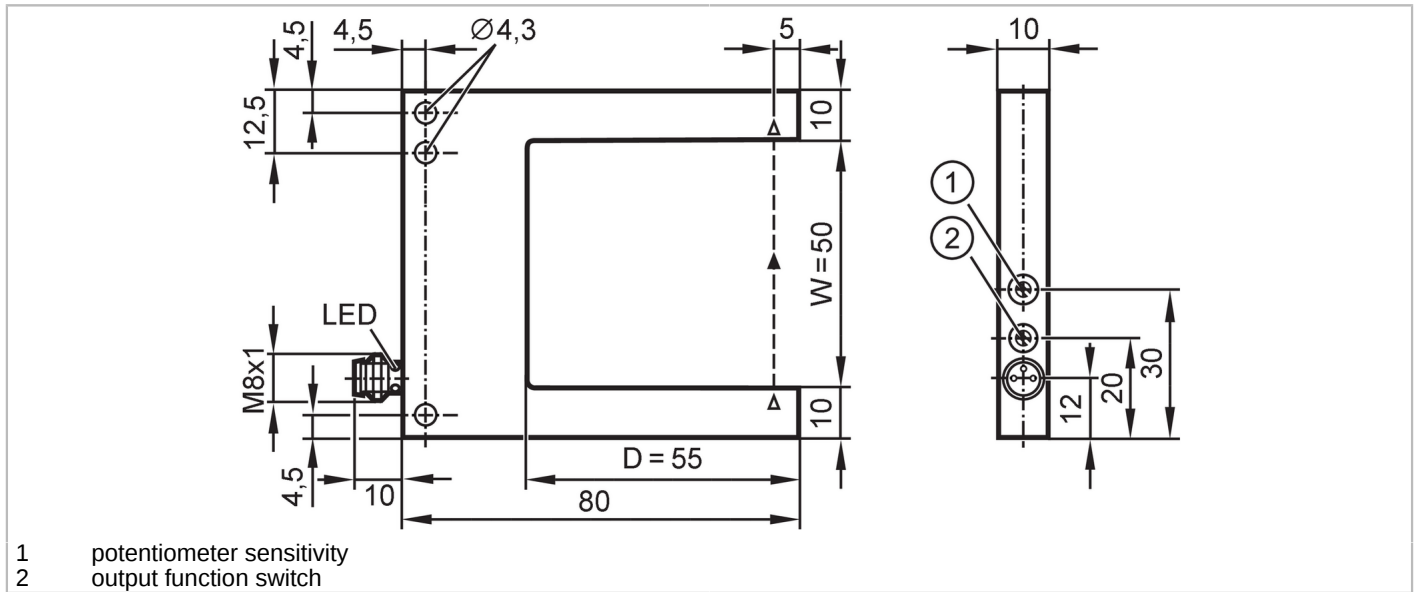


OPU203



Photoelectric fork sensor

OPU-FCKG/IO-LINK/AS



Product characteristics	
Type of light	red light
Electrical data	
Operating voltage [V]	10...30 DC; ("supply class 2" to cULus)
Current consumption [mA]	< 30
Protection class	III
Reverse polarity protection	yes
Type of light	red light
Wave length [nm]	660
Outputs	
Electrical design	PNP
Output function	light-on/dark-on mode; (selectable)
Max. voltage drop switching output DC [V]	1
Permanent current rating of switching output DC [mA]	100
Switching frequency DC [Hz]	5000
Short-circuit protection	yes
Type of short-circuit protection	pulsed
Overload protection	yes
Detection zone	
Diameter of the smallest detectable object [mm]	0.3
Interfaces	
Communication interface	IO-Link
Transmission type	COM2 (38,4 kBaud)
IO-Link revision	1.1

OPU203



Photoelectric fork sensor

OPU-FCKG/IO-LINK/AS

SDCI standard	IEC 61131-9	
Profiles	Smart Sensor - SSP 0	Generic Profiled Sensor
	Function	Device identification
	Function	Multiple switching signal
	Function	Process data variable
	Function	Device diagnosis
	Function	Teach channel
SIO mode	yes	
Required master port type	A	
Min. process cycle time [ms]	3.2	
Supported DeviceIDs	Type of operation	DeviceID
	default	978

Operating conditions

Ambient temperature [°C]	-25...60
Protection	IP 67

Tests / approvals

EMC	EN 60947-5-2
MTTF [years]	709

Mechanical data

Weight [g]	122
Dimensions [mm]	70 x 10 x 80
Fork depth D [mm]	55
Fork width W [mm]	50
Materials	housing: diecast zinc black anodised; lens: glass

Displays / operating elements

Display	switching status	1 x LED, yellow
---------	------------------	-----------------

Remarks

Remarks	operating voltage "supply class 2" according to cULus
Pack quantity	1 pcs.

Electrical connection

Connector: 1 x M8; coding: A; Contacts: 3



OPU203



Photoelectric fork sensor

OPU-FCKG/IO-LINK/AS

Connection



4 OUT / IO-Link

Other data

operating mode adjustable via IO-Link

	standard	High Resolution	Power	Speed
Resolution	0.3 mm	0.2 mm	1.0 mm	0.3 mm
Repeatability	0.02 mm	0.02 mm	0.02 mm	0.02 mm
Switching frequency	5000 Hz	1500 Hz	250 Hz	8000 Hz
Repeatability	3 σ			