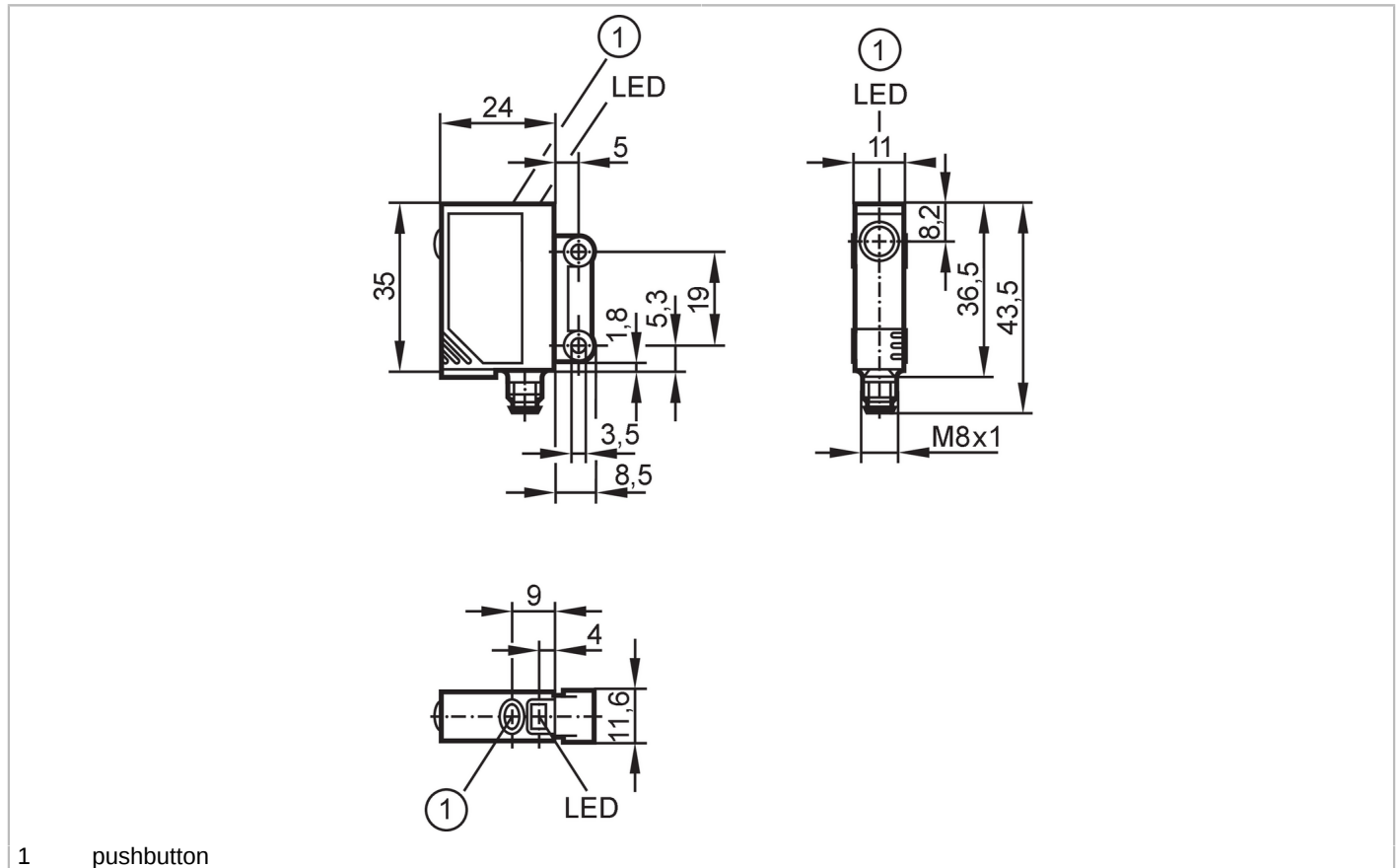




## Retro-reflective sensor for the detection of transparent objects

OJPGFPKG/SO/AS



1 pushbutton



### Product characteristics

Type of light	red light
Housing	rectangular

### Application

Special feature	polarisation filter
Function principle	Retro-reflective sensor

### Electrical data

Operating voltage [V]	10...30 DC
Current consumption [mA]	< 22
Protection class	III
Reverse polarity protection	yes
Type of light	red light
Wave length [nm]	660

### Outputs

Electrical design	PNP
Output function	light-on/dark-on mode; (programmable)
Max. voltage drop switching output DC [V]	2.5
Permanent current rating of switching output DC [mA]	200
Switching frequency DC [Hz]	2000



## Retro-reflective sensor for the detection of transparent objects

OJPGFPKG/SO/AS

Short-circuit protection	yes
Type of short-circuit protection	pulsed
Overload protection	yes

### Detection zone

Range referred to prismatic reflector [m]	0.2...1.5; (Prismatic reflector 50 x 50 mm E20722)
Range adjustable	yes
Max. light spot diameter [mm]	64
Light spot dimensions refer to	at maximum range
Polarisation filter available	yes

### Operating conditions

Ambient temperature [°C]	0...60
Protection	IP 67

### Tests / approvals

EMC	EN 60947-5-2
MTTF [years]	854

### Mechanical data

Weight [g]	27.3
Housing	rectangular
Dimensions [mm]	35 x 11 x 24
Materials	housing: ABS; LED window: SEPS; pushbutton: SEPS
Lens material	front pane:glass
Lens alignment	side lens

### Displays / operating elements

Display	switching status	1 x LED, yellow
	operation	1 x LED, green
	function	1 x LED, red
Electronic lock	yes	

### Accessories

Items supplied	screws: 2
	spring washers: 2
	Nuts: 2

### Remarks

Remarks	operating voltage "supply class 2" according to cULus
Pack quantity	1 pcs.

### Electrical connection

Connector: 1 x M8; coding: A

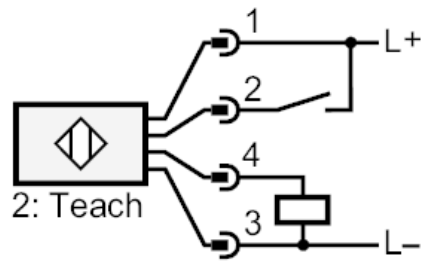




## Retro-reflective sensor for the detection of transparent objects

OJPGFPKG/SO/AS

### Connection



2 Teach

### Diagrams and graphs

excess gain graph

