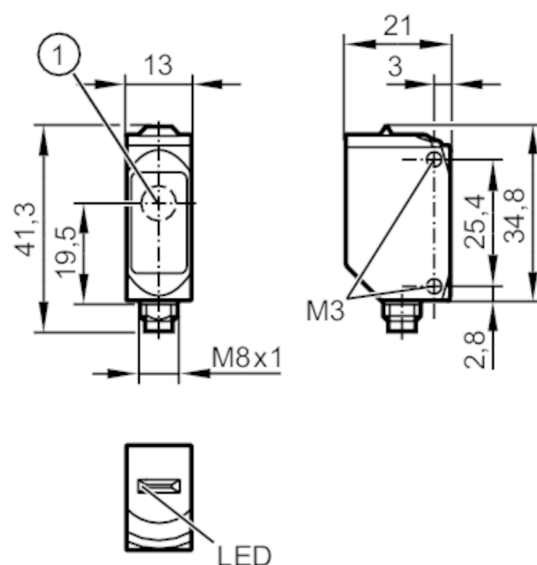


Through-beam sensor transmitter

O6S-OOKG/AS/3P



1: light emission



Product characteristics

| | |
|---------------|-------------|
| Type of light | red light |
| Housing | rectangular |

Application

| | |
|--------------------|---------------------|
| Function principle | Through-beam sensor |
|--------------------|---------------------|

Electrical data

| | | |
|---------------------|------|--------------|
| Operating voltage | [V] | 10...30 DC |
| Current consumption | [mA] | 11; ((24 V)) |
| Protection class | | III |
| Type of light | | red light |
| Wave length | [nm] | 633 |

Detection zone

| | | |
|--------------------------------|------|------------------|
| Transmitter / receiver | | transmitter |
| Range | [m] | < 10 |
| Max. light spot diameter | [mm] | 300 |
| Light spot dimensions refer to | | at maximum range |

Operating conditions

| | | |
|---------------------|------|-----------------------------|
| Ambient temperature | [°C] | -25...80 |
| Protection | | IP 65; IP 67; IP 68; IP 69K |

Tests / approvals

| | | |
|-------------|-----------------|--------------|
| EMC | | EN 60947-5-2 |
| MTTF | [years] | 2600 |
| UL approval | UL Approval no. | E002 |

Mechanical data

| | | |
|--------|-----|------|
| Weight | [g] | 33.7 |
|--------|-----|------|

O6S302



Through-beam sensor transmitter

O6S-00KG/AS/3P

| | |
|------------------------|---|
| Housing | rectangular |
| Dimensions [mm] | 34.8 x 13 x 21 |
| Materials | housing: stainless steel (316L/1.4404); plastics: PPSU; Sealing: EPDM |
| Lens material | PMMA |
| Lens alignment | side lens |
| Tightening torque [Nm] | 1; (screws) |

Displays / operating elements

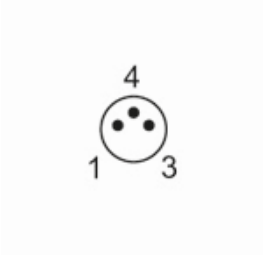
| | | |
|---------|-----------|----------------|
| Display | operation | 1 x LED, green |
|---------|-----------|----------------|

Remarks

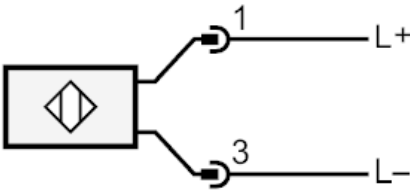
| | |
|---------------|---|
| Remarks | operating voltage "supply class 2" according to cULus |
| Pack quantity | 1 pcs. |

Electrical connection

Connector: 1 x M8; coding: A



Connection



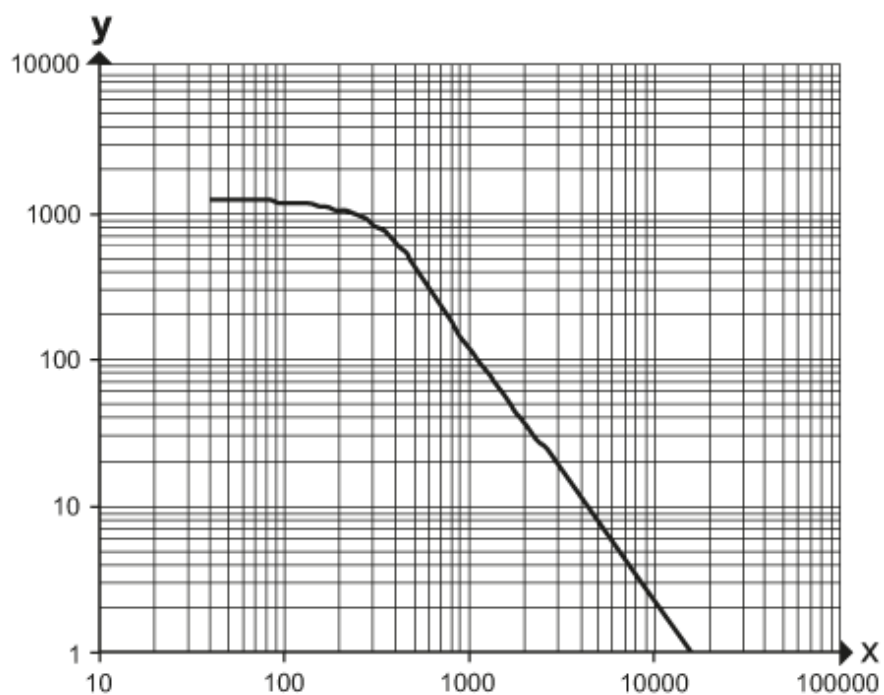


Through-beam sensor transmitter

O6S-OOKG/AS/3P

Diagrams and graphs

excess gain graph



x: distance [mm]

y: excess gain factor