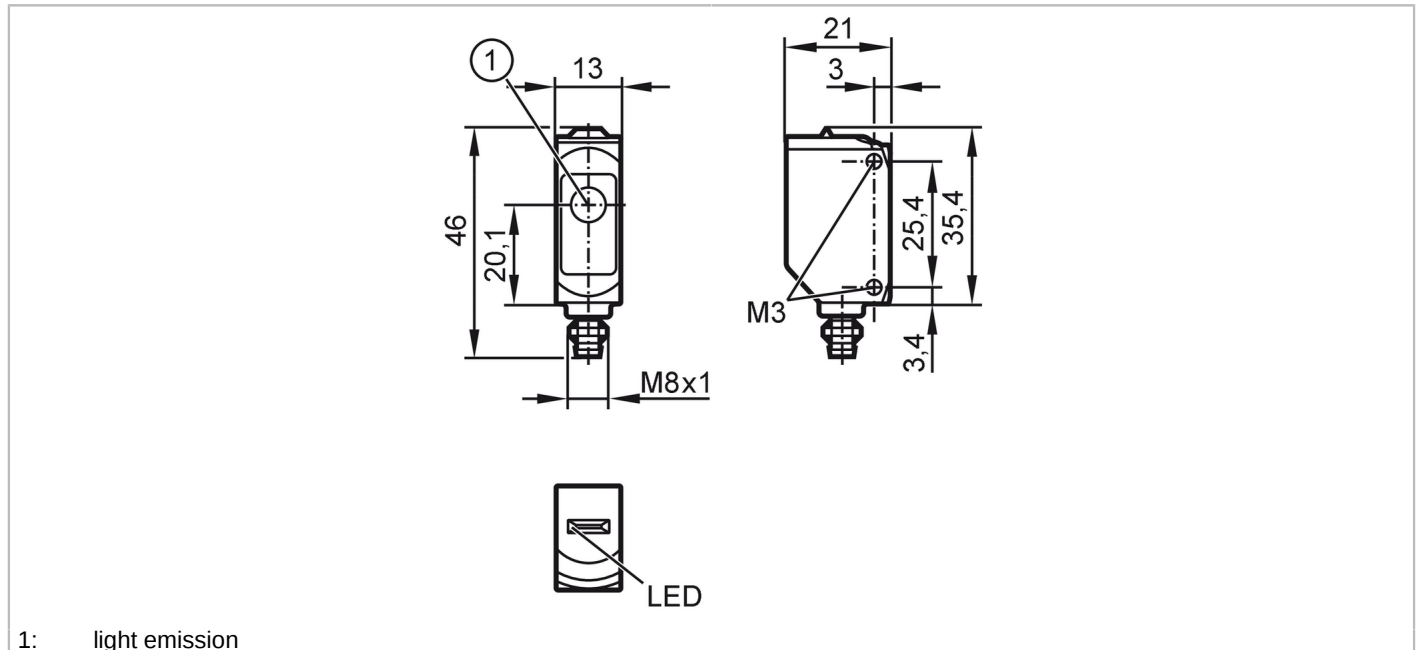


O6S203



Through-beam sensor transmitter

O6S-00KG/AS/4P



1: light emission



| Product characteristics | |
|--------------------------------|---|
| Type of light | red light |
| Housing | rectangular |
| Application | |
| Function principle | Through-beam sensor |
| Application | suited for use in the machine tool industry |
| Electrical data | |
| Operating voltage [V] | 10...30 DC |
| Current consumption [mA] | 11; ((24 V)) |
| Protection class | III |
| Type of light | red light |
| Wave length [nm] | 633 |
| Detection zone | |
| Transmitter / receiver | transmitter |
| Range [m] | < 10 |
| Max. light spot diameter [mm] | 300 |
| Light spot dimensions refer to | at maximum range |
| Operating conditions | |
| Ambient temperature [°C] | -25...60 |
| Protection | IP 65; IP 67 |
| Tests / approvals | |
| EMC | EN 60947-5-2 |
| MTTF [years] | 2600 |

O6S203



Through-beam sensor transmitter

O6S-OOKG/AS/4P

| | | |
|-------------|-----------------|-------------|
| UL approval | Ta | -25...40 °C |
| | Enclosure type | Type 1 |
| | power supply | Class 2 |
| | UL approval no. | E002 |

| Mechanical data | |
|------------------------|--|
| Weight [g] | 17.6 |
| Housing | rectangular |
| Dimensions [mm] | 35.4 x 13 x 21 |
| Materials | housing: ABS orange; upper part of the housing: PPSU black |
| Lens material | front pane:PMMA |
| Lens alignment | side lens |
| Sealing material | EPDM |
| Tightening torque [Nm] | 0.5 |

| Displays / operating elements | |
|-------------------------------|--------------------------|
| Display | operation 1 x LED, green |

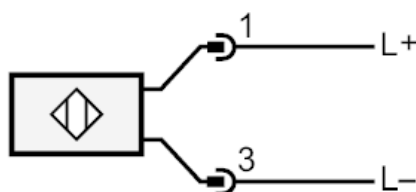
| Remarks | |
|---------------|---|
| Remarks | operating voltage "supply class 2" according to cULus |
| Pack quantity | 1 pcs. |

Electrical connection

Connector: 1 x M8; coding: A; Contacts: 4; Locking: brass, coated; Sealing: EPDM



Connection



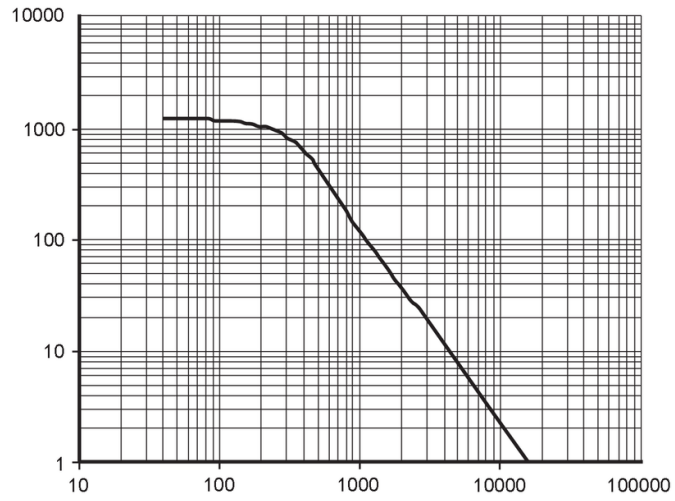


Through-beam sensor transmitter

O6S-00KG/AS/4P

Diagrams and graphs

excess gain graph



x: distance [mm]

y: excess gain factor