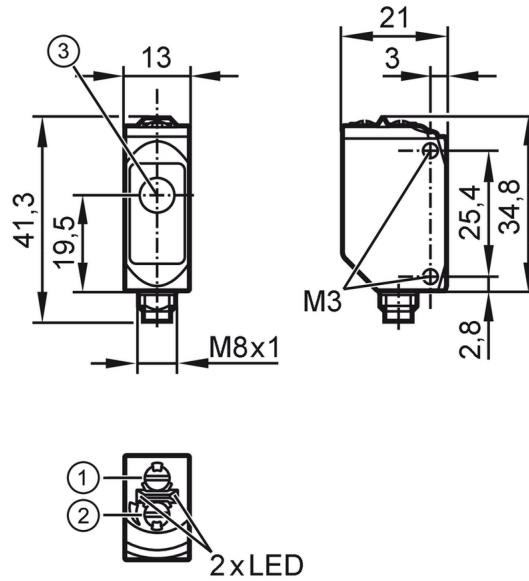


O6E306



Through-beam sensor receiver

O6E-FNKG/AS/3P



- 1: output function switch
- 2: potentiometer sensitivity
- 3: Light incidence



Product characteristics

Type of light	red light
Housing	rectangular

Application

Function principle	Through-beam sensor
--------------------	---------------------

Electrical data

Operating voltage	[V]	10...30 DC
Current consumption	[mA]	7; ((24 V))
Protection class		III
Reverse polarity protection		yes
Type of light		red light
Wave length	[nm]	633

Outputs

Electrical design		NPN
Output function		light-on/dark-on mode; (selectable)
Max. voltage drop switching output DC	[V]	2.5
Permanent current rating of switching output DC	[mA]	100
Switching frequency DC	[Hz]	1000
Short-circuit protection		yes
Type of short-circuit protection		pulsed

Detection zone

Transmitter / receiver		receiver
Range	[m]	< 10

O6E306



Through-beam sensor receiver

O6E-FNKG/AS/3P

Range adjustable	yes
------------------	-----

Operating conditions

Ambient temperature [°C]	-25...80
--------------------------	----------

Protection	IP 65; IP 67; IP 68; IP 69K
------------	-----------------------------

Tests / approvals

EMC	EN 60947-5-2
-----	--------------

MTTF [years]	1014
--------------	------

UL approval	Ta	-25...40 °C
-------------	----	-------------

Enclosure type	Type 1
----------------	--------

power supply	Class 2
--------------	---------

UL approval no.	E001
-----------------	------

Mechanical data

Weight [g]	35.7
------------	------

Housing	rectangular
---------	-------------

Dimensions [mm]	34.8 x 13 x 21
-----------------	----------------

Materials	housing: stainless steel (316L/1.4404); Sealing: EPDM; plastics: PPSU
-----------	---

Lens material	front pane:PMMA
---------------	-----------------

Lens alignment	side lens
----------------	-----------

Tightening torque [Nm]	1; (screws)
------------------------	-------------

Displays / operating elements

Display	switching status	1 x LED, yellow
---------	------------------	-----------------

operation	1 x LED, green
-----------	----------------

Remarks

Remarks	operating voltage "supply class 2" according to cULus
---------	---

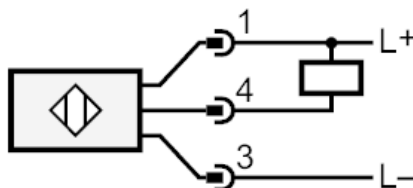
Pack quantity	1 pcs.
---------------	--------

Electrical connection

Connector: 1 x M8; coding: A; Contacts: 3



Connection



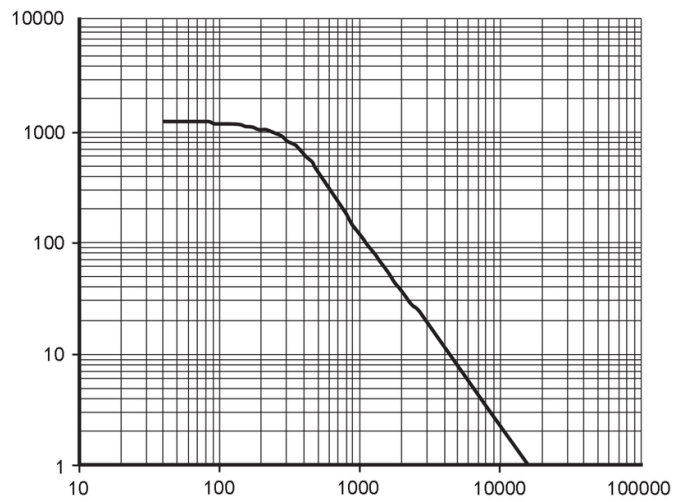


Through-beam sensor receiver

O6E-FNKG/AS/3P

Diagrams and graphs

excess gain graph



x: distance [mm]

y: excess gain factor