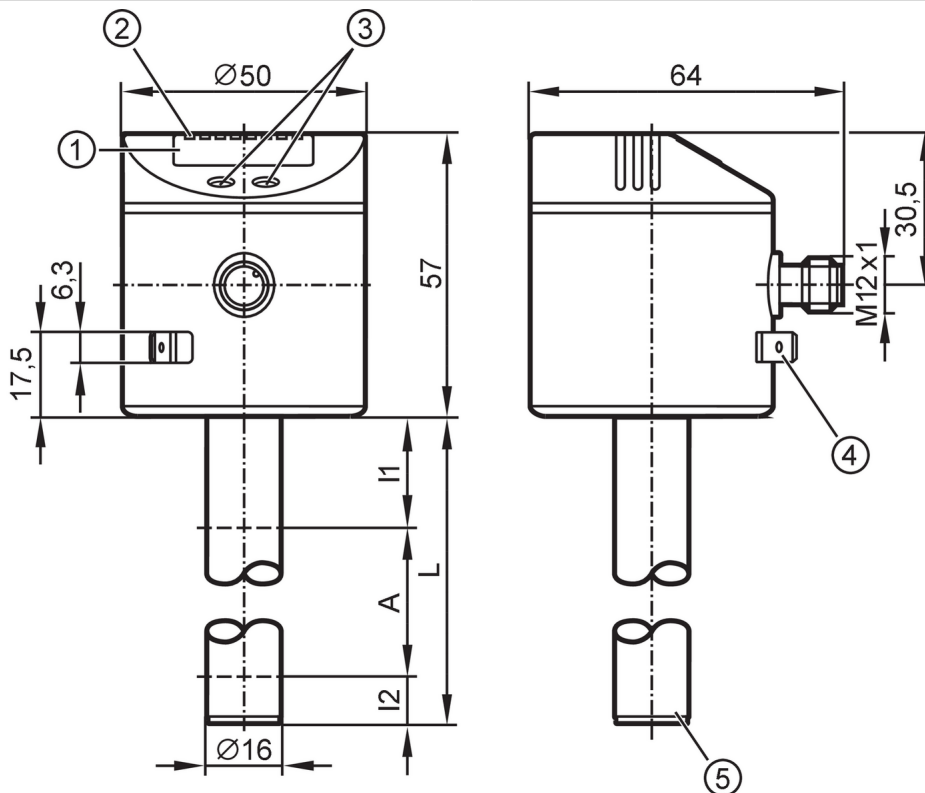


LT3022



Electronic level and temperature sensor

LT0264B-B-00KLPKG/US



- 1 alphanumeric display 4-digit
- 2 status LEDs
- 3 programming buttons
- 4 housing connection flat-pin connector 6.3 mm DIN 46244
- 5 position of the temperature measuring element



| Product characteristics | |
|------------------------------------|---|
| Number of inputs and outputs | Number of digital outputs: 1; Number of analogue outputs: 1 |
| Factory setting | mineral oils |
| Probe length L [mm] | 264 |
| Application | |
| Media | hydrous coolants; oils; oil-based media; water; media similar to water |
| Dielectric constant of the medium | > 2 |
| Cannot be used for | extremely conductive media; adhering media; granulates; bulk material; acids; alkali |
| Tank pressure | 0.5; (when mounting with mounting accessories: E43001 - E43007, E43019) bar 0.05; (when mounting with mounting accessories: E43001 - E43007, E43019) MPa |
| Coolants | |
| Medium temperature [°C] | 0...35; (with climatic tube E43100 35...65 °C) |
| Oil | |
| Medium temperature [°C] | 0...70 |
| Medium temperature short time [°C] | 0...90; (< 1 h) |
| Water | |
| Medium temperature [°C] | 0...35; (with climatic tube E43100 35...65 °C) |

LT3022



Electronic level and temperature sensor

LT0264B-B-00KLPKG/US

| Electrical data | |
|--|--|
| Operating voltage [V] | 18...30 DC |
| Current consumption [mA] | < 50 |
| Protection class | III |
| Reverse polarity protection | yes |
| Power-on delay time [s] | < 3 |
| Inputs / outputs | |
| Number of inputs and outputs | Number of digital outputs: 1; Number of analogue outputs: 1 |
| Outputs | |
| Total number of outputs | 2 |
| Output signal | switching signal; analogue signal; IO-Link |
| Electrical design | PNP/NPN |
| Number of digital outputs | 1 |
| Output function | normally open / normally closed; (parameterisable) |
| Max. voltage drop switching output DC [V] | 2.5 |
| Permanent current rating of switching output DC [mA] | 200 |
| Number of analogue outputs | 1 |
| Analogue current output [mA] | 4...20, invertible |
| Max. load [Ω] | 500 |
| Analogue voltage output [V] | 0...10, invertible |
| Min. load resistance [Ω] | 2000 |
| Short-circuit protection | yes |
| Type of short-circuit protection | thermal, pulsed |
| Overload protection | yes |
| Measuring/setting range | |
| Factory setting | mineral oils |
| Probe length L [mm] | 264 |
| Active range A [mm] | 195 |
| Inactive range I1 / I2 [mm] | 53 / 16 |
| Setting range | |
| Set point SP [mm] | 25...200 |
| Reset point rP [mm] | 20...195 |
| In steps of [mm] | 5 |
| Reference point OP [mm] | 69 - 82 - 94 - 106 - 118 - 130 - 143 - 155 - 167 - 179 - 191 - 204 - OFF |
| Hysteresis, OP [mm] | 2 |
| Temperature monitoring | |
| Measuring range [°C] | -20...90 |
| Set point SP [°C] | -19.5...90 |
| Reset point rP [°C] | -20...89.5 |
| In steps of [°C] | 0.5 |

LT3022



Electronic level and temperature sensor

LT0264B-B-00KLPKG/US

| | | |
|--------------------------------|-----|-----|
| Resolution of switching output | [K] | 0.5 |
|--------------------------------|-----|-----|

Accuracy / deviations

| | | |
|-----------------------|------------------------|-----|
| Measuring error | | ± 5 |
| | [% of the final value] | |
| Repeatability | | ± 2 |
| Resolution | [mm] | 5 |
| Zero signal (voltage) | [V] | 0 |
| Zero signal (current) | [mA] | 4.0 |
| Full signal (voltage) | [V] | 10 |
| Full signal (current) | [mA] | 20 |

Temperature monitoring

| | | |
|-----------------------|-----|-------|
| Switch point accuracy | [K] | ± 1,5 |
| Resolution | [K] | 0.5 |
| Dynamic response T09 | [s] | 90 |

Software / programming

| | |
|---------------------------|--|
| Parameter setting options | hysteresis / window; normally open / normally closed; switching logic; current/voltage output; SP/rP position; adjustment OP; medium selection; offset setting; switch-on/switch-off delay |
|---------------------------|--|

Interfaces

| | | |
|---------------------------|--------------------------|-------------------------|
| Communication interface | IO-Link | |
| Transmission type | COM2 (38,4 kBaud) | |
| IO-Link revision | 1.1 | |
| SDCI standard | IEC 61131-9 | |
| Profiles | Smart Sensor - SSP 0 | Generic Profiled Sensor |
| | Function | Device identification |
| | Function | Process data variable |
| | Function | Device diagnosis |
| SIO mode | yes | |
| Required master port type | A | |
| Process data analogue | 4 | |
| Process data binary | 1 | |
| Min. process cycle time | [ms] | 4.5 |
| Supported DeviceIDs | Type of operation | DeviceID |
| | default | 646 |

Operating conditions

| | | |
|---------------------|------|----------|
| Ambient temperature | [°C] | 0...60 |
| Storage temperature | [°C] | -25...80 |
| Protection | | IP 67 |

Tests / approvals

| | | |
|----------------------|-------------------|--------------------|
| EMC | DIN EN 61000-6-2 | |
| | DIN EN 61000-6-4 | |
| Shock resistance | DIN EN 60068-2-27 | 15 g (11 ms) |
| Vibration resistance | DIN EN 60068-2-6 | 5 g (10...2000 Hz) |
| MTTF | [years] | 222 |

LT3022



Electronic level and temperature sensor

LT0264B-B-00KLPKG/US

| | | |
|-------------|-----------------|------|
| UL approval | UL approval no. | H002 |
|-------------|-----------------|------|

Mechanical data

| | | |
|--------------------------|---|------|
| Weight | [g] | 290 |
| Dimensions | [mm] | Ø 16 |
| Materials | stainless steel (304/1.4301); stainless steel (316L/1.4404); FKM; NBR; PBT; PC; PA; PP; TPV | |
| Materials (wetted parts) | PP | |

Displays / operating elements

| | | |
|---------|-------------------|-----------------------------------|
| Display | Display unit | 4 x LED, green (cm, inch, °C, °F) |
| | switching status | 1 x LED, yellow |
| | measured values | alphanumeric display, 4-digit |
| | parameter setting | alphanumeric display, 4-digit |

Remarks

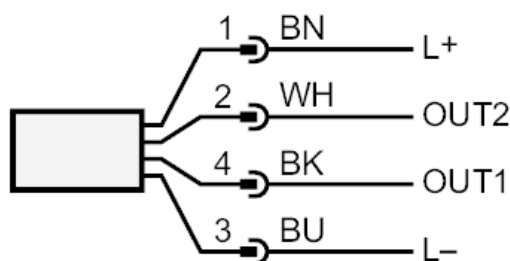
| | |
|---------------|--------|
| Pack quantity | 1 pcs. |
|---------------|--------|

Electrical connection

Connector: 1 x M12; coding: A



Connection



OUT1: switching output IO-Link
 OUT2: analogue output
 colours to DIN EN 60947-5-2

Core colours :

BK = black
 BN = brown
 BU = blue
 WH = white