

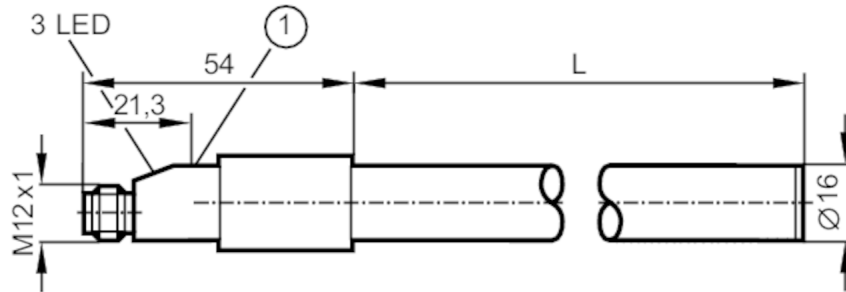
# LI5045



## Sensor for point level detection

LI0273--K-00KNPKG/US/V

Article no longer available - archive entry



1 programming button



### Product characteristics

Number of inputs and outputs	Number of digital outputs: 1
Probe length L [mm]	273

### Application

Special feature	Gold-plated contacts
Media	water; hydrous media; coolant emulsions
Cannot be used for	acids and alkalis; liquids with dielectric constant < 20 (e.g. oils)
Medium temperature [°C]	0...35
Tank pressure [bar]	0.5; (when mounting with mounting accessories: E43001 - E43007, E43019)

### Electrical data

Operating voltage [V]	10...36 DC
Current consumption [mA]	13; (24 V)
Protection class	II
Reverse polarity protection	yes

### Inputs / outputs

Number of inputs and outputs	Number of digital outputs: 1
------------------------------	------------------------------

# LI5045



## Sensor for point level detection

LI0273--K-00KNPKG/US/V

Outputs		
Total number of outputs		1
Output signal		switching signal
Electrical design		PNP
Number of digital outputs		1
Output function		normally open / normally closed; (parameterisable)
Max. voltage drop switching output DC [V]		2.5
Permanent current rating of switching output DC [mA]		250
Switching frequency DC [Hz]		5
Short-circuit protection		yes
Type of short-circuit protection		pulsed
Overload protection		yes
Measuring/setting range		
Probe length L [mm]		273
Operating conditions		
Ambient temperature [°C]		-25...80
Protection		IP 67
Tests / approvals		
EMC	EN 61000-4-2 ESD	15 kV CD / 8 kV AD
	EN 61000-4-3 HF radiated	10 V/m
	EN 61000-4-4 Burst	2 kV coupling clamp
	EN 61000-4-6 HF conducted	10 V (500 Ω AC)
Mechanical data		
Dimensions [mm]		Ø 16
Materials		PP; TPE-V
Materials (wetted parts)		PP
Displays / operating elements		
Display	operation	1 x LED, green
	switching status	1 x LED, yellow
	unsafe zone	1 x LED, red
Remarks		
Remarks	On delivery the programming button is electronically locked.	
Pack quantity	1 pcs.	
Electrical connection		
Connector: 1 x M12; Contacts: gold-plated		

# LI5045



## Sensor for point level detection

LI0273--K-00KNPKG/US/V

