

KT5106



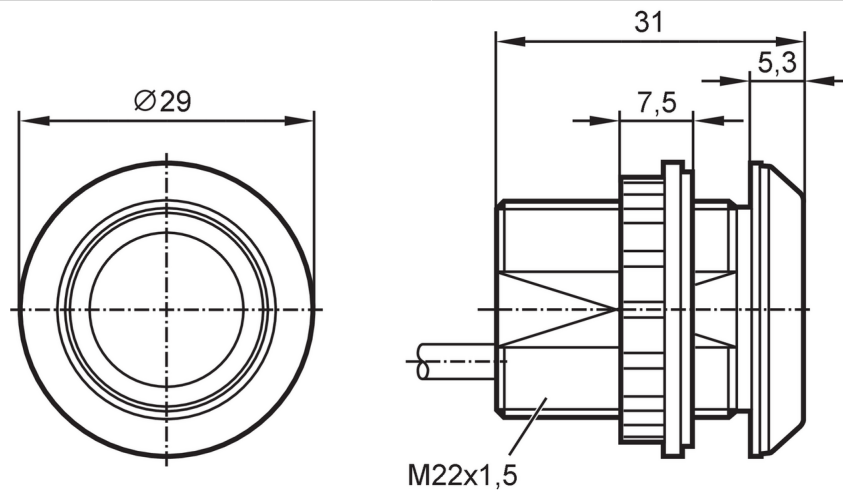
Illuminated capacitive touch sensor

KTMSF-K-RBPKG/US/0,3M

Article no longer available - archive entry

Alternative articles: KTE106

When selecting an alternative article and accessories please note that technical data may differ!



Product characteristics

Electrical design	PNP
Output function	normally open
Housing	threaded type
Dimensions [mm]	M22 x 1.5 / L = 31

Application

Operating principle	static
---------------------	--------

Electrical data

Operating voltage [V]	12...30 DC
Current consumption [mA]	30
Protection class	III
Reverse polarity protection	yes
Max. power-on delay time [ms]	500

Outputs

Electrical design	PNP
Output function	normally open
Permanent current rating of switching output DC [mA]	200
Short-circuit protection	yes
Overload protection	yes

Response times

Response time [ms]	35
--------------------	----

Operating conditions

Ambient temperature [°C]	-40...85
Protection	IP 65; IP 67; IP 69K; (on the front)

KT5106



Illuminated capacitive touch sensor

KTMSF-K-RBPKG/US/0,3M

Tests / approvals

MTTF	[years]	352
------	---------	-----

Mechanical data

Weight	[g]	55.5
Housing		threaded type
Dimensions	[mm]	M22 x 1.5 / L = 31
Thread designation		M22 x 1.5
Materials		PA 6.6-GF30 black; active face: PA Grilamid TR 90UV

Displays / operating elements

Display	switching status	1 x LED, red
	operation	1 x LED, green

Accessories

Items supplied	lock nuts: 1 x M22
	Gasket: 1
Accessories (optional)	symbol disc

Remarks

Pack quantity	1 pcs.
---------------	--------

Electrical connection - plug

Cable: 0.3 m, PUR

Connector: 1 x M12; coding: A; Contacts: 4



Connection

