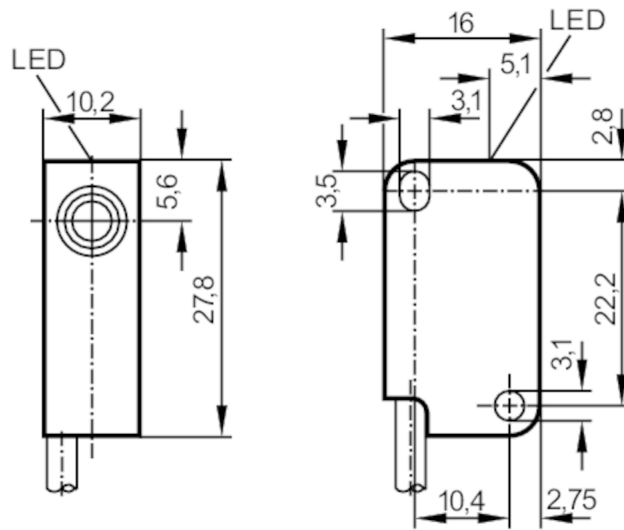


# IS5001



## Inductive sensor

IS-3002-BPKG



### Product characteristics

|                   |      |                  |
|-------------------|------|------------------|
| Electrical design |      | PNP              |
| Output function   |      | normally open    |
| Sensing range     | [mm] | 2                |
| Housing           |      | rectangular      |
| Dimensions        | [mm] | 27.8 x 10.2 x 16 |

### Electrical data

|                             |      |            |
|-----------------------------|------|------------|
| Operating voltage           | [V]  | 10...30 DC |
| Current consumption         | [mA] | < 15       |
| Protection class            |      | III        |
| Reverse polarity protection |      | yes        |

### Outputs

|   |      |               |
|---|------|---------------|
| Electrical design                               |      | PNP           |
| Output function                                 |      | normally open |
| Max. voltage drop switching output DC           | [V]  | 2.5           |
| Max. leakage current                            | [mA] | 0.5           |
| Permanent current rating of switching output DC | [mA] | 200           |
| Short-time current rating of switching output   | [mA] | 200           |
| Switching frequency DC                          | [Hz] | 800           |
| Short-circuit protection                        |      | yes           |
| Overload protection                             |      | yes           |

### Detection zone

|                       |      |          |
|-----------------------|------|----------|
| Sensing range         | [mm] | 2        |
| Real sensing range Sr | [mm] | 2 ± 10 % |

# IS5001



## Inductive sensor

IS-3002-BPKG

|                                      |                           |   |
|--------------------------------------|---------------------------|---|
| Operating distance                   | [mm]                      | 0...1.62  |
| <b>Accuracy / deviations</b>         |                           |   |
| Correction factor                    |                           | steel: 1 / stainless steel: 0.7 / brass: 0.4 / aluminium: 0.3 / copper: 0.2 |
| Hysteresis                           | [% of Sr]                 | 1...15  |
| Switch point drift                   | [% of Sr]                 | -10...10  |
| <b>Operating conditions</b>          |                           |   |
| Ambient temperature                  | [°C]                      | -25...80  |
| Protection                           |                           | IP 67   |
| <b>Tests / approvals</b>             |                           |   |
| EMC                                  | EN 61000-4-2 ESD          | -- CD / 8 kV AD   |
|                                      | EN 61000-4-3 HF radiated  | 10 V/m  |
|                                      | EN 61000-4-4 Burst        | 2 kV  |
|                                      | EN 61000-4-5 Surge        | 0,5 kV  |
|                                      | EN 61000-4-6 HF conducted | 10 V  |
|                                      | EN 55011                  | class B   |
| Vibration resistance                 | EN 60947-5-2              |   |
| Shock resistance                     | EN 60947-5-2              |   |
| MTTF                                 | [years]                   | 3044  |
| UL approval                          | Ta                        | -25...80 °C   |
|                                      | Enclosure type            | Type 1  |
|                                      | power supply              | Class 2   |
|                                      | File number UL            | E174191   |
| <b>Mechanical data</b>               |                           |   |
| Weight                               | [g]                       | 44.6  |
| Housing                              |                           | rectangular   |
| Mounting                             |                           | flush mountable   |
| Dimensions                           | [mm]                      | 27.8 x 10.2 x 16  |
| Materials                            |                           | housing: PBT  |
| Tightening torque                    | [Nm]                      | < 0.5; (with washer)  |
| <b>Displays / operating elements</b> |                           |   |
| Display                              | switching status          | 1 x LED, yellow   |
| <b>Remarks</b>                       |                           |   |
| Pack quantity                        |                           | 1 pcs.  |

# IS5001



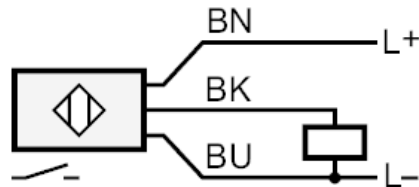
## Inductive sensor

IS-3002-BPKG

### Electrical connection

Cable: 2 m, PVC,  $\varnothing$  3.5 mm; 3 x 0.14 mm<sup>2</sup>

### Connection



Core colours :  
BN = brown  
BU = blue  
BK = black