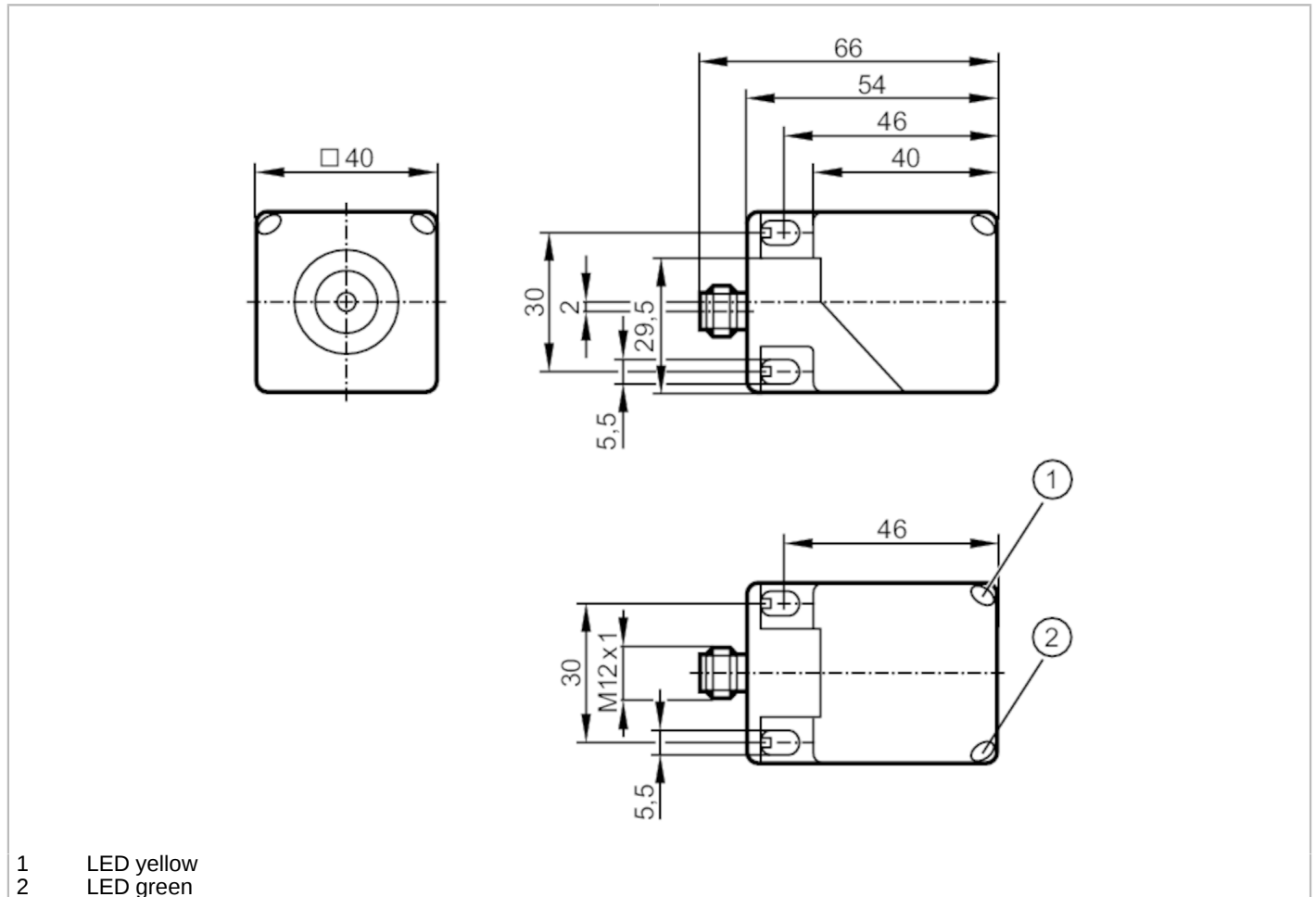


IM5142



Inductive analogue sensor with IO-Link

IMC4026A2PKG/IO/US



- 1 LED yellow
- 2 LED green



Product characteristics		
Housing		rectangular
Dimensions	[mm]	40 x 40 x 54
Electrical data		
Operating voltage	[V]	15...30 DC
Current consumption	[mA]	< 20
Protection class		II
Reverse polarity protection		yes
Outputs		
Analogue voltage output	[V]	0...10; (linear; gradient: 0,4 V/mm; for frontal approach and for target made of mild steel: 90 x 90 x 1 mm)
Min. load resistance	[Ω]	2000
Short-circuit protection		yes
Overload protection		yes
Detection zone		
Measuring range	[mm]	1...26
Accuracy / deviations		
Correction factor		steel: 1 / stainless steel: 0.7 / brass: 0.5 / aluminium: 0.4 / copper: 0.3

IM5142



Inductive analogue sensor with IO-Link

IMC4026A2PKG/IO/US

Linearity error of analogue output [%]	$\pm 3\%$; (of UA max)
Repeatability analogue output [%]	$\pm 2\%$; (of UA max)

Response times

Response time [ms]	< 20
--------------------	------

Operating conditions

Ambient temperature [°C]	-25...80
Protection	IP 67

Tests / approvals

MTTF [years]	231	
UL approval	Ta	-25...70 °C
	Enclosure type	Type 1
	power supply	Class 2
	File number UL	E174191

Mechanical data

Weight [g]	157
Housing	rectangular
Sensing face	5 positions selectable
Mounting	non-flush mountable
Dimensions [mm]	40 x 40 x 54
Materials	PA; brass white bronze coated

Displays / operating elements

Display	within the operating range	1 x LED, yellow lights
	outside the operating range	1 x LED, yellow flashing
	operation	LED, green

Remarks

Pack quantity	1 pcs.
---------------	--------

Electrical connection - plug

Connector: 1 x M12; coding: A



IM5142



Inductive analogue sensor with IO-Link

IMC4026A2PKG/IO/US

Connection

