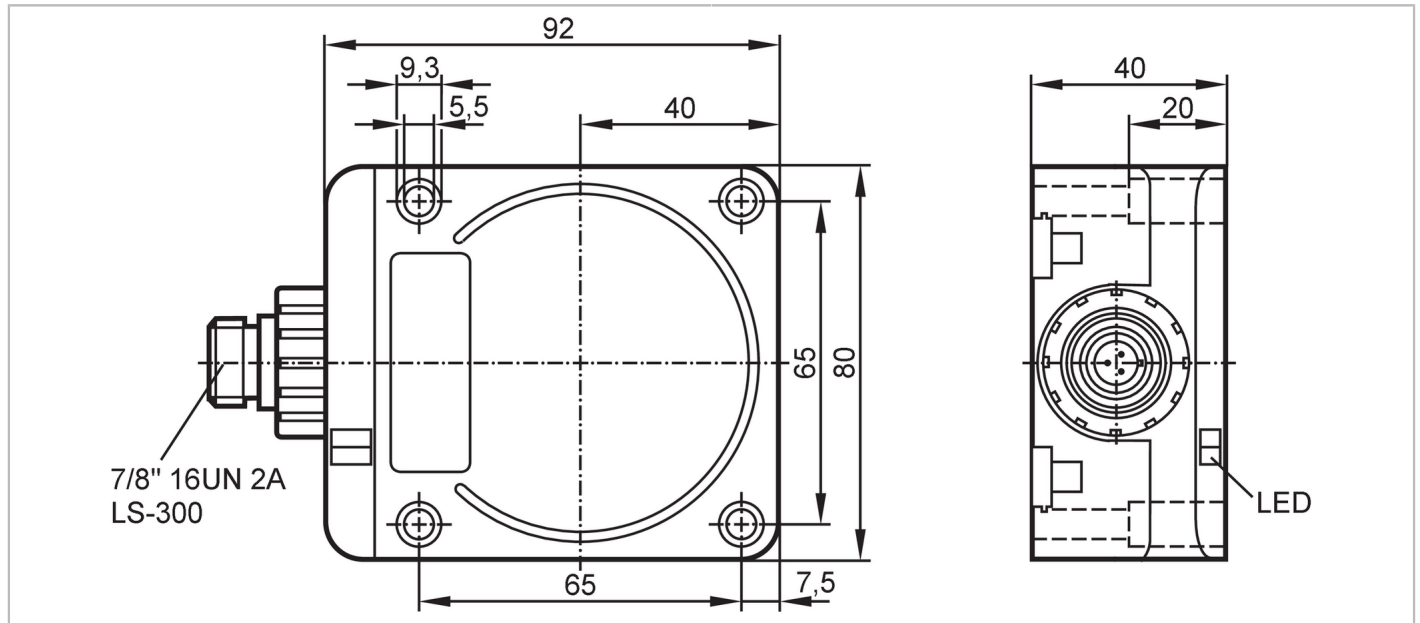


# ID0038



## Inductive sensor

IDC2050BARKA/SL/LS-300BL



Product characteristics	
Output function	normally open
Sensing range [mm]	50
Housing	rectangular
Dimensions [mm]	92 x 80 x 40
Electrical data	
Frequency AC [Hz]	47...63
Operating voltage [V]	20...140 AC / 10...140 DC
Protection class	I
Reverse polarity protection	yes
Outputs	
Output function	normally open
Max. voltage drop switching output DC [V]	6
Max. voltage drop switching output AC [V]	6
Minimum load current [mA]	5.5
Max. leakage current [mA]	1.7 (140 V AC/DC)
Permanent current rating of switching output AC [mA]	450
Permanent current rating of switching output DC [mA]	450
Short-time current rating of switching output [mA]	2200; (20 ms / 0,5 Hz)
Switching frequency AC [Hz]	25
Switching frequency DC [Hz]	25
Short-circuit protection	yes

# ID0038



## Inductive sensor

IDC2050BARKA/SL/LS-300BL

Type of short-circuit protection		pulsed
Overload protection		yes
<b>Detection zone</b>		
Sensing range	[mm]	50
Operating distance	[mm]	0...40.5; (mounted flush with mild steel (ST37))
<b>Accuracy / deviations</b>		
Correction factor		steel: 1 / stainless steel: 0.85 / brass: 0.48 / aluminium: 0.46 / copper: 0.38
Hysteresis	[% of Sr]	3...20
Switch point drift	[% of Sr]	-15...15
<b>Operating conditions</b>		
Ambient temperature	[°C]	-25...70
Protection		IP 67
<b>Tests / approvals</b>		
EMC		EN 60947-5-2
MTTF	[years]	352
UL approval	Ta	0...40 °C
	Enclosure type	Type 1
	File number UL	E174191
<b>Mechanical data</b>		
Weight	[g]	432.5
Housing		rectangular
Mounting		flush mountable
Dimensions	[mm]	92 x 80 x 40
Materials		PPE; diecast zinc; brass nickel-plated
<b>Displays / operating elements</b>		
Display	switching status	1 x LED, red
	operation	1 x LED, green
	short circuit	1 x LED, green/red alternately flashing
<b>Accessories</b>		
Items supplied		sealing plug: 1
<b>Remarks</b>		
Pack quantity		1 pcs.

# ID0038



## Inductive sensor

IDC2050BARKA/SL/LS-300BL

### Electrical connection - plug

Connector: 1 x 7/8"; coding: A

