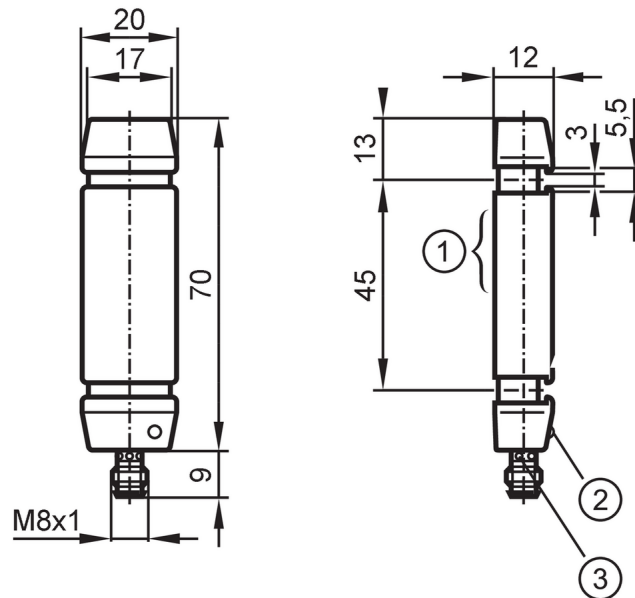




Inductive tube sensor

I8-3014-BPKG/AS-610-DPS



- 1 Sensing face
- 2 LED operating status
- 3 LED switching status



Product characteristics

Electrical design		PNP
Output function		normally open
Sensing range	[mm]	< 14
Housing		rectangular
Dimensions	[mm]	70 x 20 x 12

Application

Operating principle		static
---------------------	--	--------

Electrical data

Operating voltage	[V]	10...35 DC
Current consumption	[mA]	< 15
Protection class		III
Reverse polarity protection		yes

Outputs

Electrical design		PNP
Output function		normally open
Max. voltage drop switching output DC	[V]	2
Permanent current rating of switching output DC	[mA]	200
Short-circuit protection		yes
Overload protection		yes

Detection zone

Sensing range	[mm]	< 14
---------------	------	------

I85000



Inductive tube sensor

I8-3014-BPKG/AS-610-DPS

Resolution of steel ball (diameter)	[mm]	3
Max. part speed	[m/s]	35

Response times

Pulse stretching	[ms]	100
Max. fall time	[ms]	100
Response time	[ms]	< 0.5

Operating conditions

Ambient temperature	[°C]	-25...70
Protection		IP 67

Tests / approvals

MTTF	[years]	1332
UL approval	Ta	-25...70 °C
	Enclosure type	Type 4X (indoor use only) / 12 and 13
	power supply	Class 2
	File number UL	E174191

Mechanical data

Weight	[g]	50
Housing		rectangular
Dimensions	[mm]	70 x 20 x 12
Materials		housing: PC

Displays / operating elements

Display	switching status	1 x LED, yellow
	operation	1 x LED, green

Accessories

Items supplied	fixing straps: 2
----------------	------------------

Remarks

Pack quantity	1 pcs.
---------------	--------

Electrical connection - plug

Connector: 1 x M8; coding: A



I85000



Inductive tube sensor

I8-3014-BPKG/AS-610-DPS

Connection

