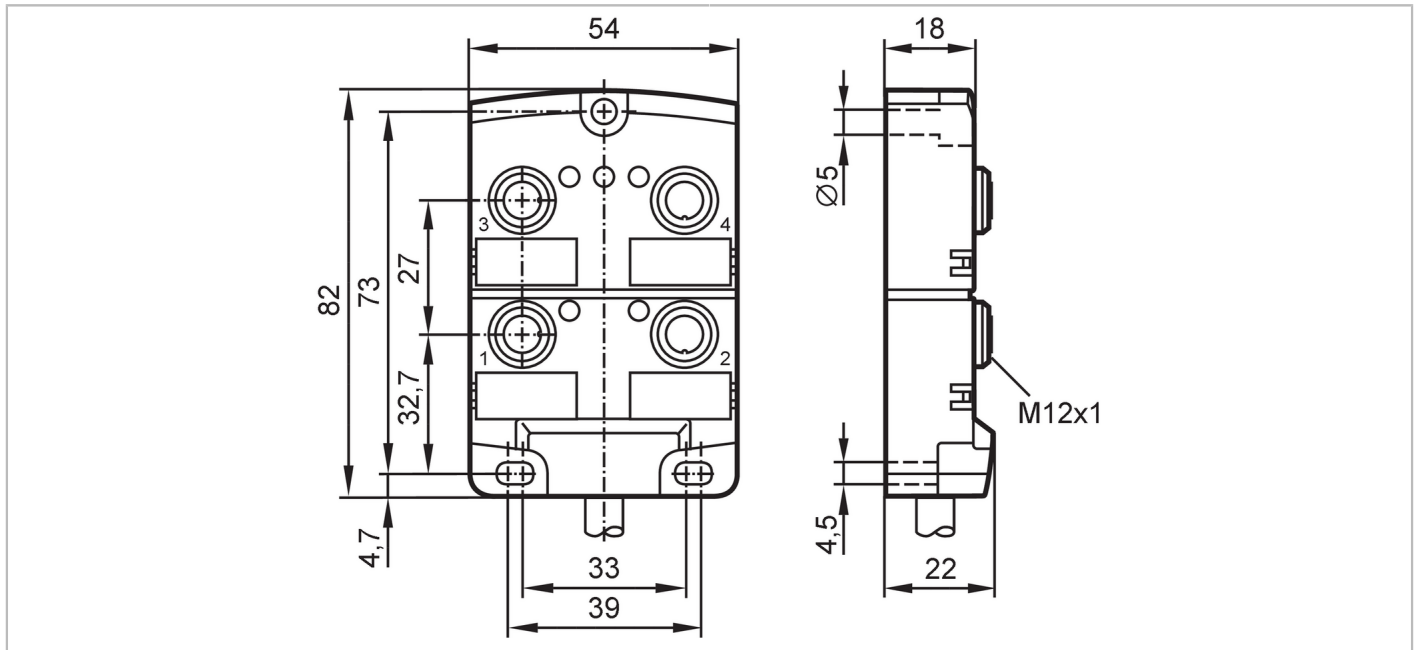


# EBC027



## Splitter box

ZDO4H055MSS0010H07



Application		
Special feature		Free from silicone; Halogen-free; Gold-plated contacts; Drag chain suitability
Free from silicone		yes
Electrical data		
Operating voltage	[V]	10...30 DC; ("supply class 2" to cULus)
Protection class		II
Max. current load per module/slot	[A]	4
Max. current load total	[A]	12
Outputs		
Electrical design		PNP
Operating conditions		
Ambient temperature	[°C]	-25...80
Ambient temperature (moving)	[°C]	-5...60
Protection		IP 67; IP 68
Mechanical data		
Weight	[g]	970
Housing		rectangular
Type of mounting		backplane mounting
Dimensions	[mm]	82 x 54 x 22
Materials		housing: PA
Material nut		brass, nickel-plated
Number of ports splitter box		4
Connector type		M12
Drag chain suitability		yes

# EBC027



## Splitter box

ZDO4H055MSS0010H07

Drag chain suitability	bending radius for flexible use	min. 10 x cable diameter
	bending cycles	> 2 Mio.

### Displays / operating elements

Display	switching status	4 x LED, yellow
	operation	1 x LED, green

### Accessories

Items supplied	Protective caps: 2
	labels: 4

### Remarks

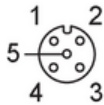
Pack quantity	1 pcs.
---------------	--------

### Electrical connection

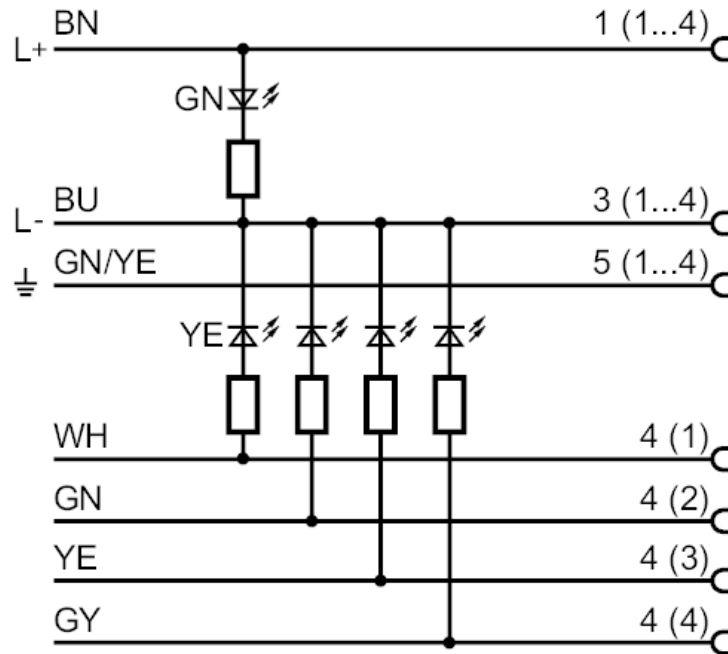
Cable: 10 m, PUR, Halogen-free, black, Ø 7.5 mm; 4 x 0.34 mm<sup>2</sup> (43 x Ø 0.1 mm) + 3 x 1 mm<sup>2</sup> (55 x Ø 0.15 mm)

### Electrical connection - slot

Connector: 4 x M12; coding: A; Contacts: 4, gold-plated; Locking: brass, nickel-plated; Tightening torque: 0.8...1.5 Nm



### Connection



- Core colours :
- BN = brown
  - BU = blue
  - GN = green
  - GN/YE = green/yellow
  - GY = grey
  - WH = white
  - YE = yellow