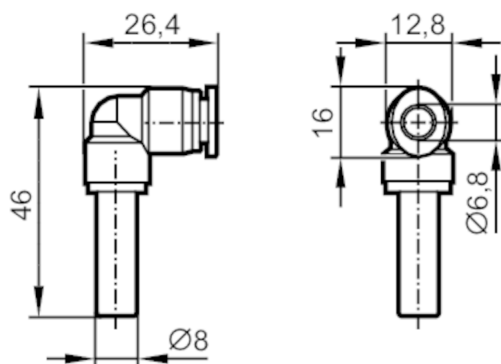




## Push-in L-fitting for pneumatic connections

AirBox push-in L-connector 10 pcs.



### Application

Media	compressed air according to ISO 8573-1: 2001
-------	--

### Operating conditions

Operating pressure	[bar]	20; (min. -0,95)
Ambient temperature	[°C]	-20...80

### Mechanical data

Weight	[g]	34.5
Materials	housing: nickel-plated brass / PA66; Tooth lock washer: stainless steel	
Tube fittings		6 mm
Sleeve diameter	[mm]	8

### Remarks

Pack quantity	10 pcs.
---------------	---------