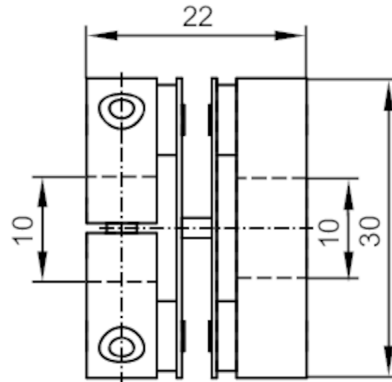


E60118



Spring disc coupling electrically isolating

SPRING COUPLING 30-10-10-22



Mechanical data	
Weight [g]	29.9
Dimensions [mm]	Ø 30 / L = 22
Materials	aluminium; PA
Tightening torque [Nm]	tightening torque screws: 100 Ncm; Spring disc coupling: 60 Ncm
Outer diameter D [mm]	30
Inner diameter 1 [mm]	10
Inner diameter 2 [mm]	10
Clamping screw [mm]	M3 x 10 - ISO 4762 (2x)
Length L [mm]	22
Max. revolution, mechanical [U/min]	12000
Max. axial shaft misalignment [mm]	± 0,4
Max. radial shaft misalignment [mm]	± 0,3
Max. angular displacement [°]	± 2,5
Rigidity of the torsion spring [Nm/rad]	50
Remarks	
Remarks	The data indicated apply to couplings with the above hub borings at an ambient temperature of 23 °C. The values of radial, angular and axial displacement are maximum values which must not reach their maximum simultaneously while in operation.
Pack quantity	1 pcs.