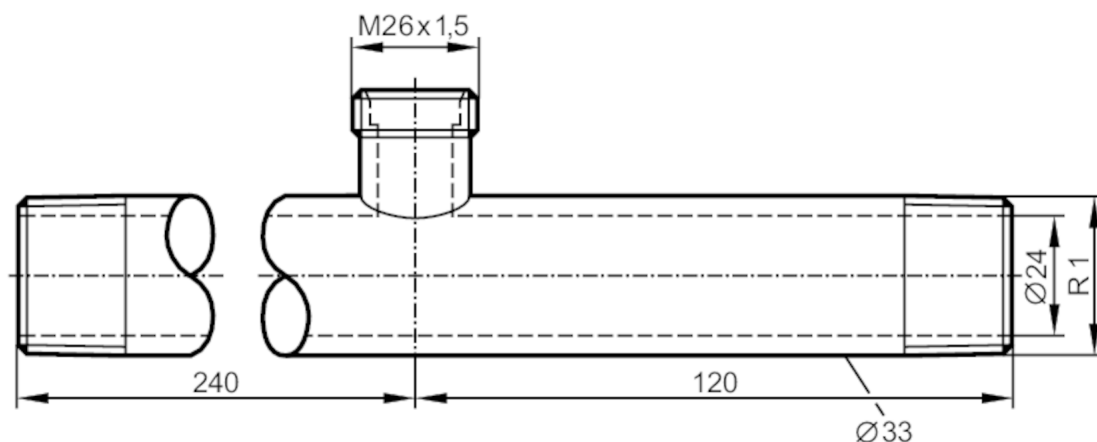




T-piece

T-PIECE R1-M26X1.5-R1



Application

| | |
|-----------------------|--|
| Design | for sensors and adapters with process connection M26x1,5 |
| Flow range [l/min] | 0...40 |
| Application | for industrial applications |
| Media | liquids and gases |
| Pressure rating [bar] | 30 |

Tests / approvals

| | |
|------------------------------|---|
| Pressure Equipment Directive | A possible classification to PED depends on the application and has to be carried out by the user / operator. |
| Safety instructions | The compatibility between medium and product material has to be checked in all applications. |

Mechanical data

| | |
|--------------------|--------------------------------|
| Weight [g] | 1265 |
| Materials | stainless steel (316Ti/1.4571) |
| Sensor connection | M26 x 1,5 |
| Process connection | threaded connection R 1 |

Accessories

| | |
|------------------------|---|
| Accessories (optional) | Adapter: 1 x M18 x 1,5, for direct connection of flow sensors, E40104 |
|------------------------|---|

Remarks

| | |
|---------------|--------|
| Pack quantity | 1 pcs. |
|---------------|--------|