



Process adapter Tri-Clamp

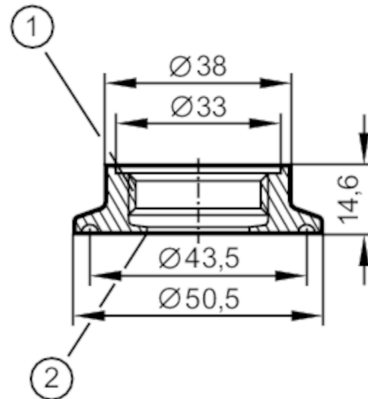
ADA IFM-CLAMP ISO2852/1-1.5

Article no longer available - archive entry

Alternative articles: E33701

When selecting an alternative article and accessories please note that technical data may differ!

The alternative article requires the use of a new sensor with Aseptoflex Vario external thread



- 1 Aseptoflex thread
- 2 Aseptoflex sealing edge

EC 1935/2004 FCM 

Application		
Pressure rating	[bar]	16
Tests / approvals		
Pressure Equipment Directive	A possible classification to PED depends on the application and has to be carried out by the user / operator.	
Safety instructions	The compatibility between medium and product material has to be checked in all applications.	
Mechanical data		
Weight	[g]	127
Materials	stainless steel (316L/1.4404)	
Sensor connection	Aseptoflex	
Process connection	Clamp DN25...DN40 (1...1,5") DIN 32676 (ISO 2852)	
Surface characteristics Ra/Rz of the wetted parts	0.4 / 4	
Remarks		
Pack quantity	1 pcs.	