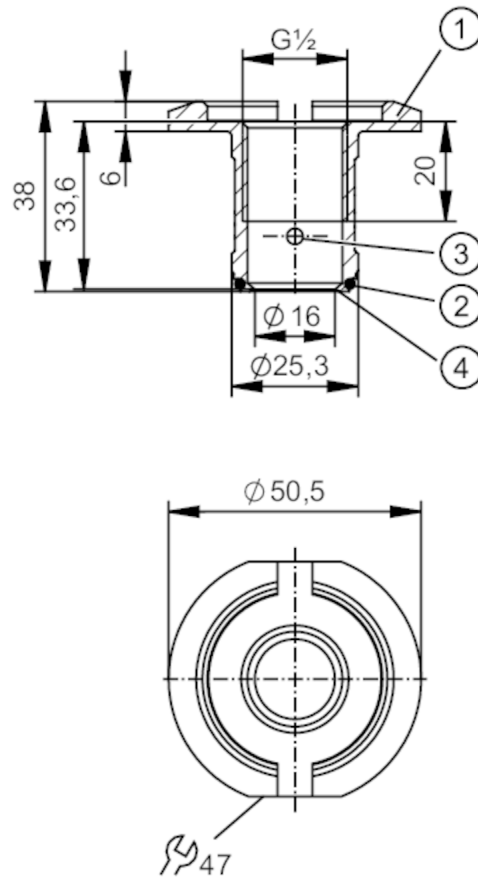


## Process adapter Tri-Clamp

ADAPT G1/2 - 3A/DN38



- 1 Adapter
- 2 Gasket
- 3 Leakage port
- 4 sealing edge



EC 1935/2004 FDA

### Application

Pressure rating [bar] 25

### Tests / approvals

|                              |   |
|------------------------------|---|
| Pressure Equipment Directive | A possible classification to PED depends on the application and has to be carried out by the user / operator. |
| Safety instructions          | The compatibility between medium and product material has to be checked in all applications.                  |

### Mechanical data

|   |                               |
|---|-------------------------------|
| Weight [g]  | 142.5                         |
| Materials   | stainless steel (316L/1.4404) |
| Sensor connection                                 | G 1/2 sealing cone            |
| Process connection                                | Clamp DN38 (1,5")             |
| Surface characteristics Ra/Rz of the wetted parts | < 0.8 / 8                     |
| Sealing   | metal to PEEK                 |
| Hygienic equipment class to DIN 11866             | H3                            |

# E33405



## Process adapter Tri-Clamp

ADAPT G1/2 - 3A/DN38

### Accessories

Items supplied

O-ring: 1, EPDM

### Remarks

Pack quantity

1 pcs.