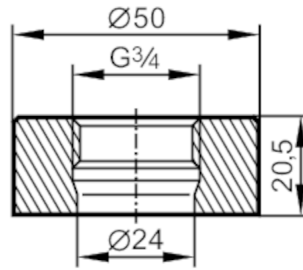


E30009



Welding adapter for process sensors

WELDING ADAPT G3/4



| Application | |
|------------------------------|---|
| Pressure rating [bar] | 25 |
| Note on pressure rating | for the connection sensor - adapter |
| Tests / approvals | |
| Pressure Equipment Directive | A possible classification to PED depends on the application and has to be carried out by the user / operator. |
| Safety instructions | The compatibility between medium and product material has to be checked in all applications. |
| Mechanical data | |
| Weight [g] | 290.5 |
| Materials (wetted parts) | stainless steel (1.4404 / 316L) ; surface characteristics : Ra<0,4 / Rz 4 |
| Sensor connection | G 3/4 |
| Process connection | welding adapter Ø 50 mm |
| Remarks | |
| Pack quantity | 1 pcs. |