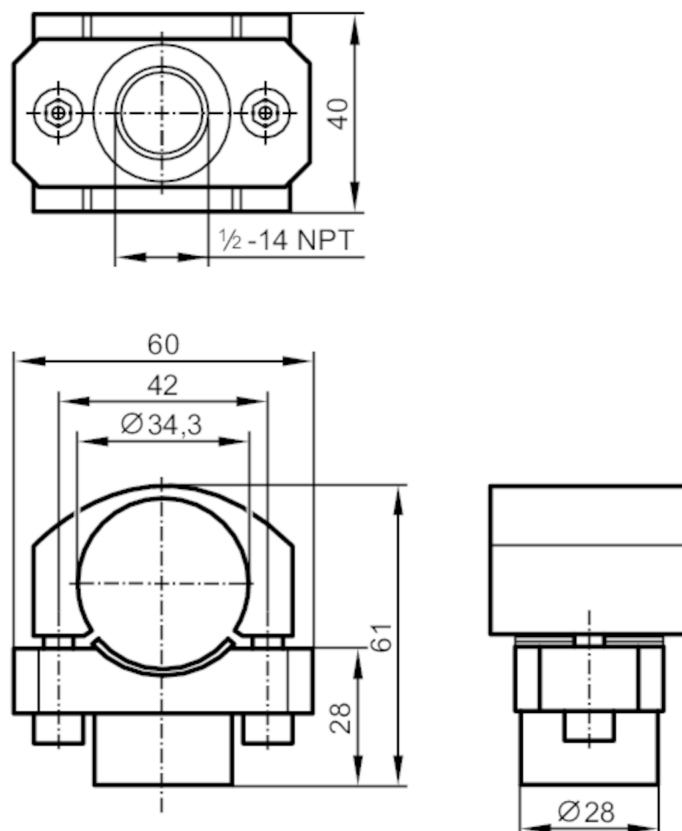


Conduit adapter mounting set for connectors

CONDUIT ADAPTER 1/2 NPT



1 Sealing

Application

Design	For pressure sensors with lateral connector, for protective tube with coupling, 1/2 - 14 NPT
--------	--

Mechanical data

Weight	[g]	393.5
Materials	Clamping device: stainless steel (1.4305 / 303); clamp: stainless steel (316L/1.4404); Sealing: FKM	
Tightening torque	[Nm]	5; (see operating instructions)

Remarks

Pack quantity	1 pcs.
---------------	--------