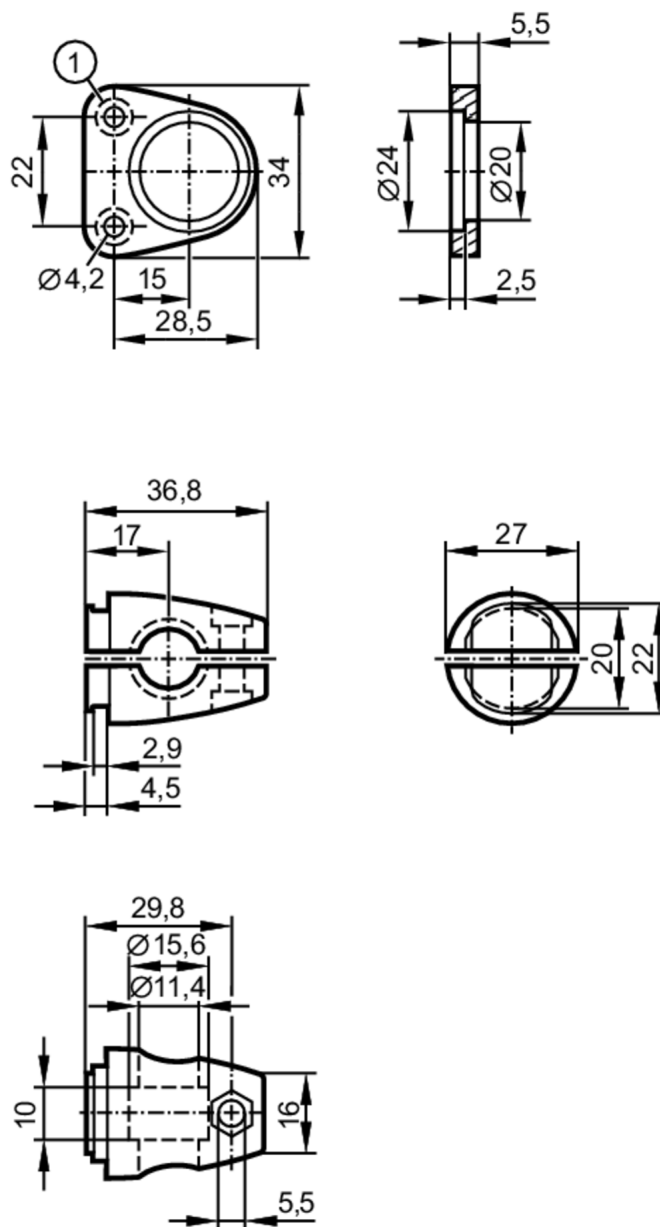


## Mounting set

Mounting Set Compact Cam



1 blind hole  $\varnothing 7.4 \times 4.9$  mm

### Application

Design

clamp mounting O2D5, for types O2I5

### Mechanical data

Weight

[g]

112.5

Type of mounting

Mounting rod; ( $\varnothing 12$  mm)

Materials

Clamps: stainless steel (316L/1.4404); cylinder screws: hot galvanised M4 x 8; mounting bracket: stainless steel (304/1.4301)

# E2D500



## Mounting set

Mounting Set Compact Cam

### Accessories

Items supplied

Clamps: 2

cylinder screws: 2 x M4 x 8

mounting bracket: 1

Hexagon nut: 1 x M5

head cap screw: 1 x M5 x 16

### Remarks

Pack quantity

1 pcs.