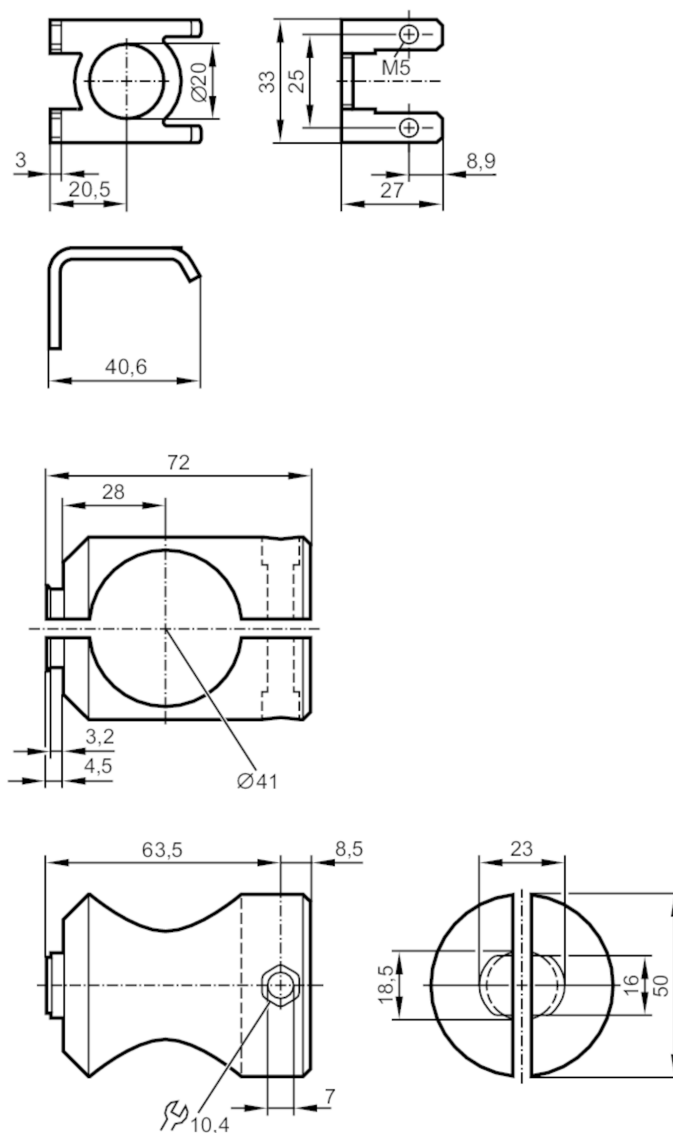


Mounting set for photoelectric sensors

MOUNTING SET FOR O5 ROD



Application

Design

clamp mounting

Mechanical data

Weight

[g]

236.5

Type of mounting

Mounting rod; ($\varnothing 40$ mm)

Materials

fixture: stainless steel (316Ti/1.4571); Clamp: aluminium uncoloured anodised

Accessories

Items supplied

socket head screw: 1 x M6 x 40

socket head screws: 2 x M5 x 8

Hexagon nut: 1 x M6

Remarks

Pack quantity

1 pcs.