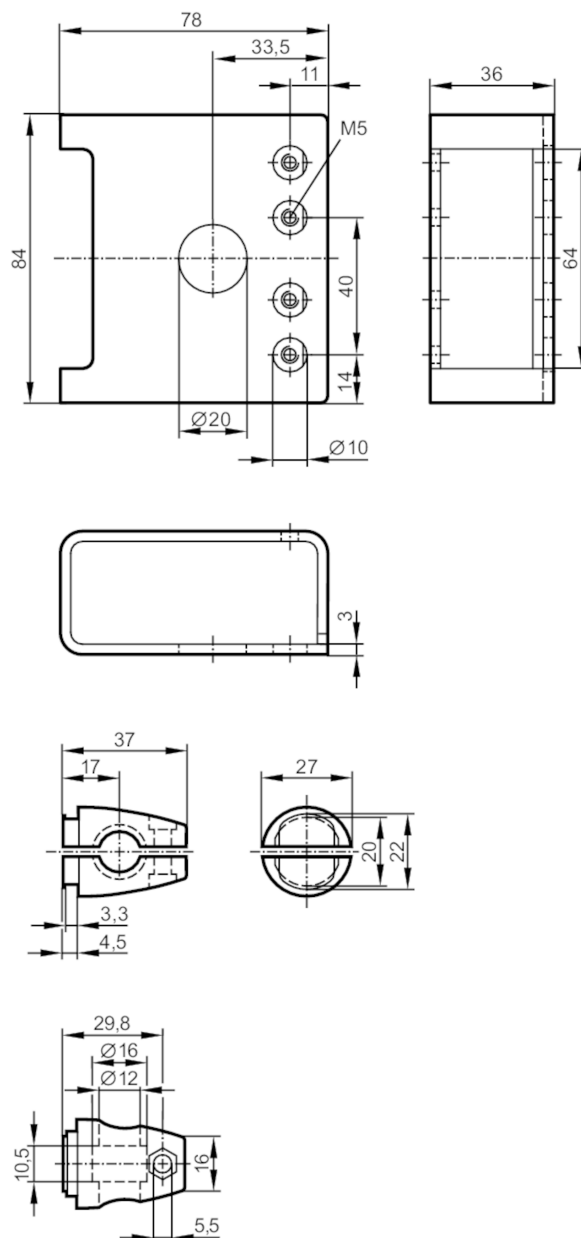


Mounting set with protective cover for photoelectric sensors

O4 PROTECTIVE BRACKET 200



Application

Design: clamp mounting, with protective cover

Mechanical data

Weight [g]: 371.5

Type of mounting: Mounting rod; (Ø 12 mm)

Materials: stainless steel (1.4404 / 316L); Clamp: diecast zinc

Accessories

Items supplied: head cap screw: 1 x M5 x 16
cylinder screws: 2 x M5 x 30

E21215



Mounting set with protective cover for photoelectric sensors

O4 PROTECTIVE BRACKET 200

Remarks	
---------	--

Pack quantity	1 pcs.
---------------	--------