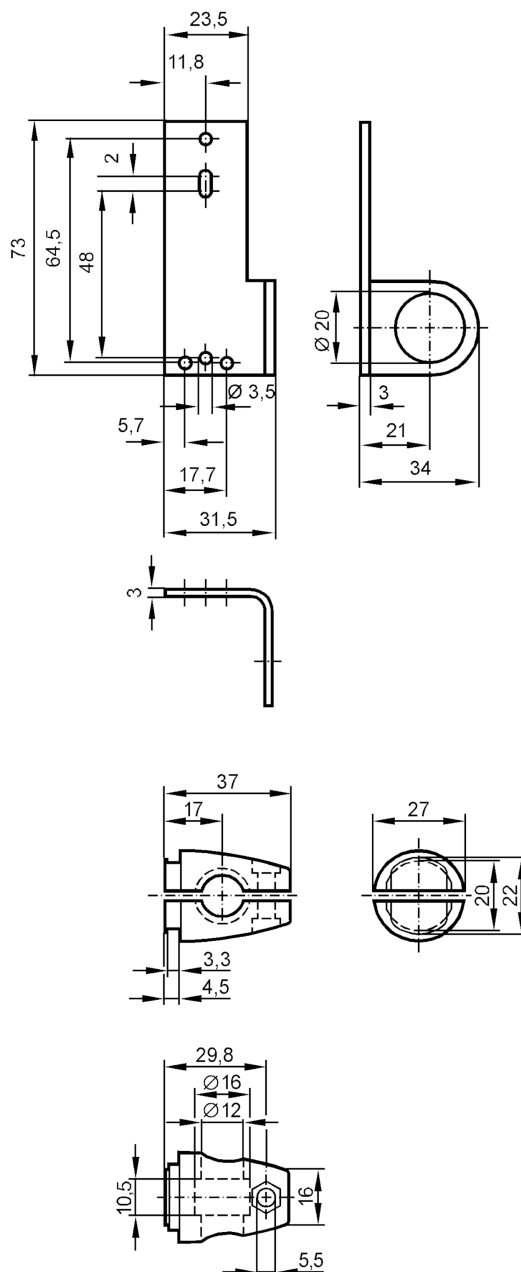


Mounting set for reflectors

SYSTEM COMPONENT REFL BOLT



Application

Design

clamp mounting, for reflector, 72,5 x 19 mm

Mechanical data

Weight

[g]

215.5

Type of mounting

free-standing; (M10)

Materials

fixture: stainless steel (316Ti/1.4571); Clamp: stainless steel (1.4408)

Accessories

Items supplied

head cap screw: 1 x M10 x 55

Remarks

Pack quantity

1 pcs.